

An architectural rendering of a modern urban development at dusk. The central focus is a large, multi-story glass building with a flat roof and a prominent corner, labeled "THE HUB" on its upper facade. To its left is a building with a red sign that reads "SDSU T CENTER". To the right is a tall, modern building with blue-tinted balconies. In the foreground, a paved plaza with a circular garden area is populated with people walking, sitting, and riding a bicycle. The garden features various plants and trees, including a pink-blossomed tree. A "SDSU" sign is visible on a lower building. In the background, a tall, thin tower rises against a dark, cloudy sky. The overall scene is illuminated by warm streetlights and building lights, creating a vibrant urban atmosphere.

# SDSU | Mission Valley



SAN DIEGO STATE  
UNIVERSITY



# Outline of Presentation

- Overview of CEQA Process
- Scoping Phase
- Project Overview
- Potential Impacts
- Next Steps
- Providing Input



SAN DIEGO STATE  
UNIVERSITY





# CEQA Process

1. NOP/Scoping
2. Draft EIR
3. Final EIR
4. Approval/Certification by Lead Agency



SAN DIEGO STATE  
UNIVERSITY





# NOP Scoping Phase

- What impacts will this project have?
- Which ones are likely to be significant?
- Ensure that we do not miss any impacts that need to be studied
- All scoping comments will be included in Draft EIR
- We will consider all comments in analyzing impacts

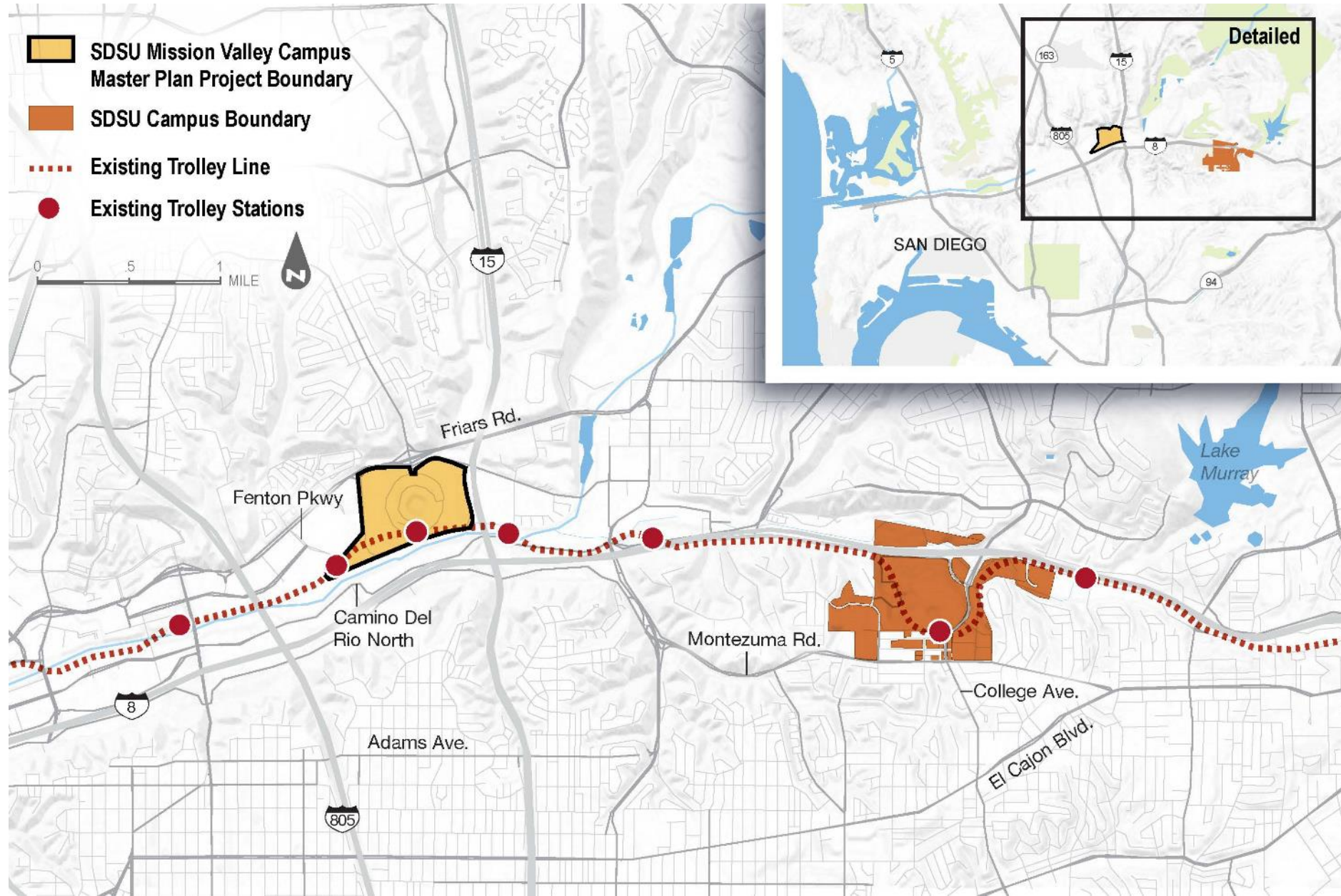


SAN DIEGO STATE  
UNIVERSITY





# Project overview



# Project overview

83 Acres of open space



SAN DIEGO STATE  
UNIVERSITY



# Project overview

83 Acres of open space

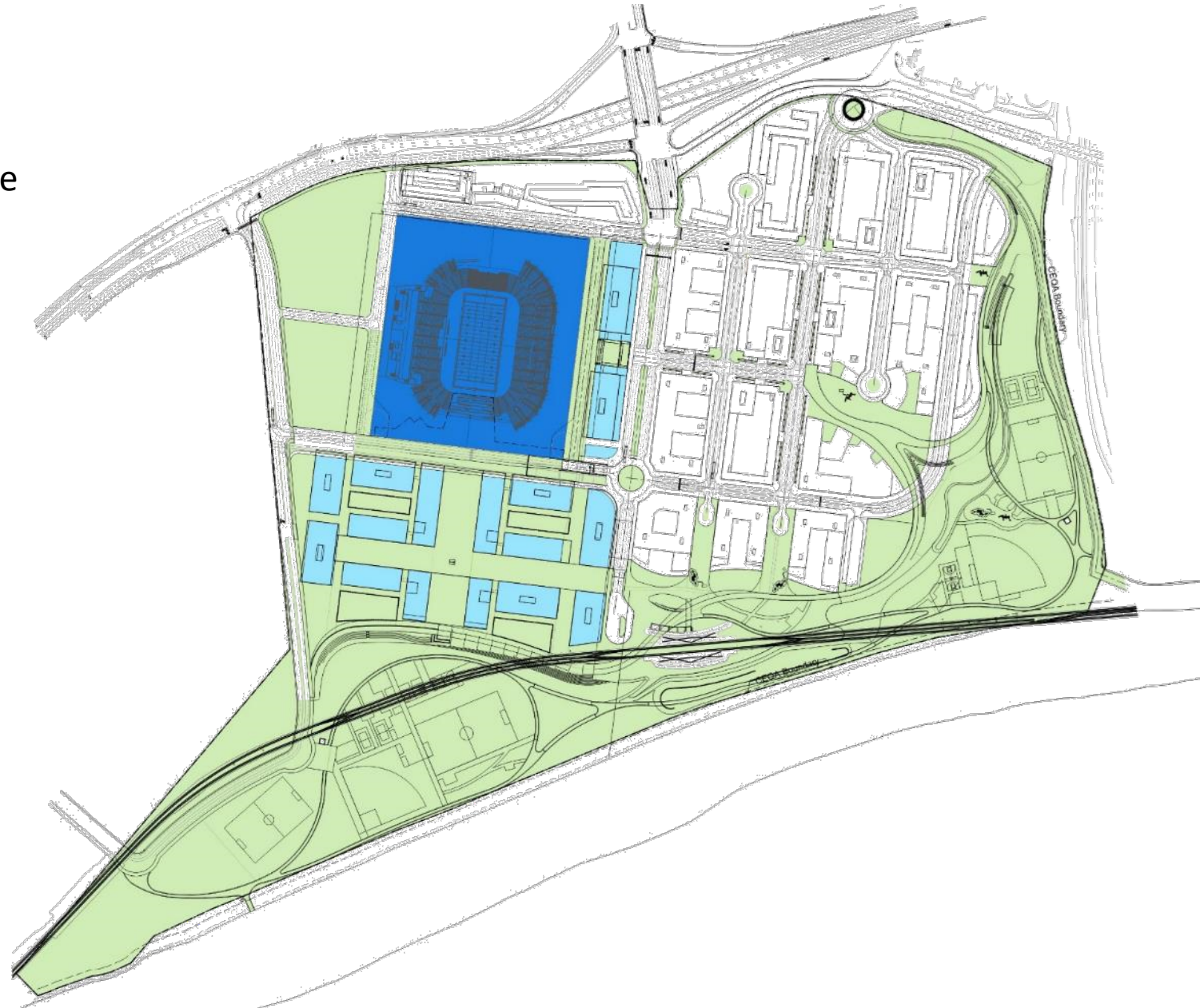
1.6 M GSF of Campus Space



SAN DIEGO STATE  
UNIVERSITY

# Project overview

- 83 Acres of open space
- 1.6 M GSF of Campus Space
- 35,000 Seat Stadium

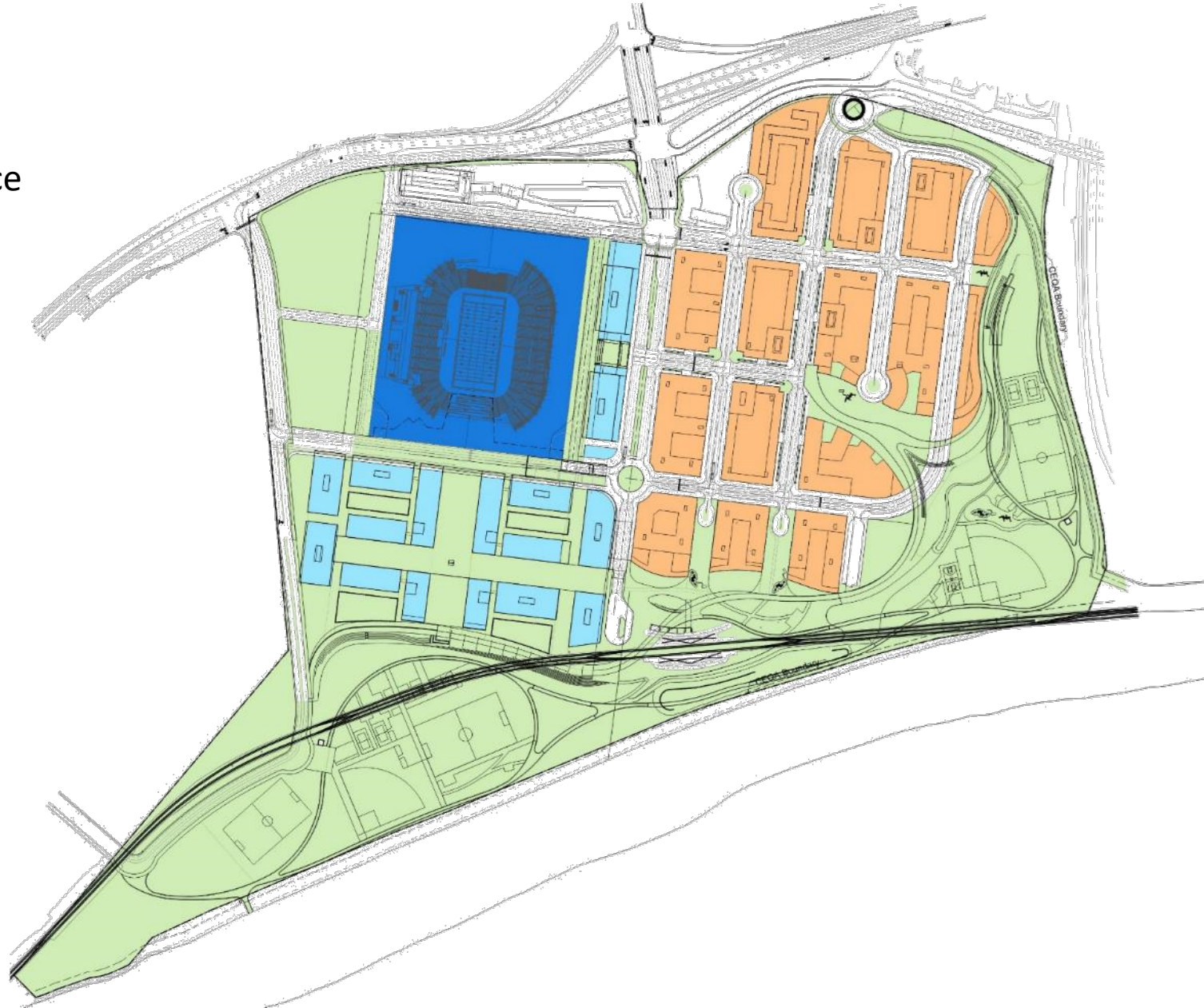


SAN DIEGO STATE  
UNIVERSITY



# Project overview

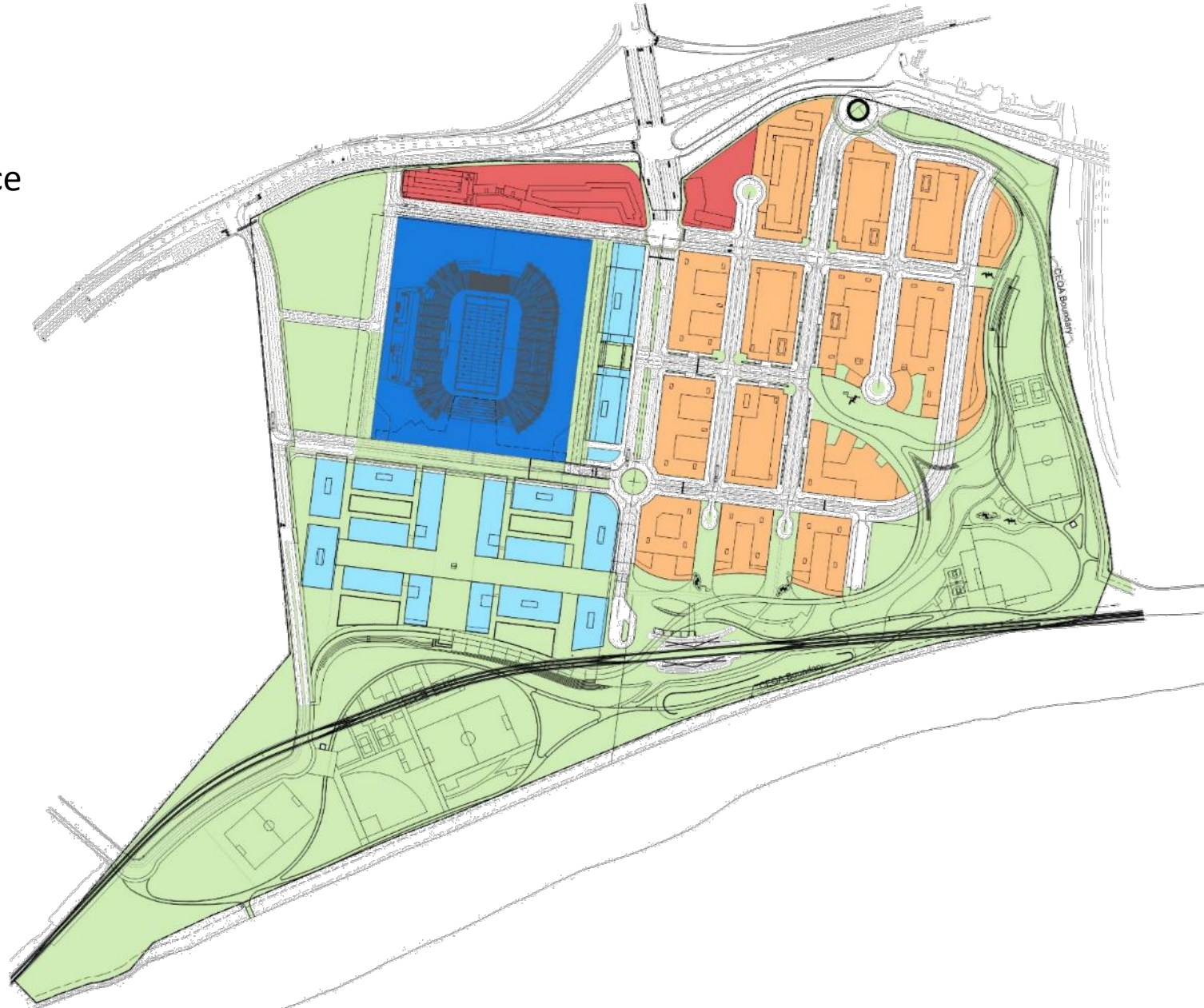
- 83 Acres of open space
- 1.6 M GSF of Campus Space
- 35,000 Seat Stadium
- 4,600 Residential Units





# Project overview

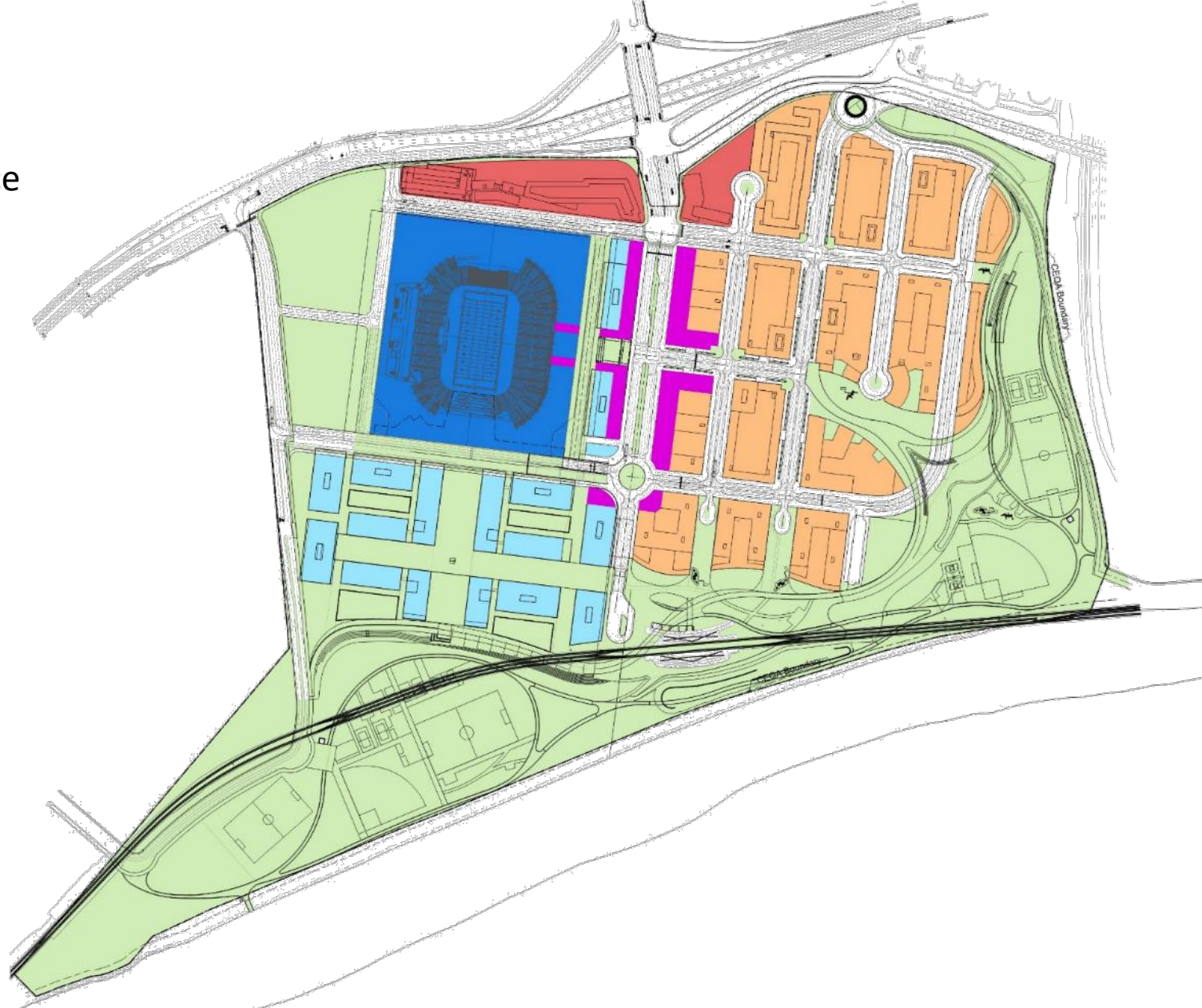
- 83 Acres of open space
- 1.6 M GSF of Campus Space
- 35,000 Seat Stadium
- 4,600 Residential Units
- 400 Hotel Rooms





# Project overview

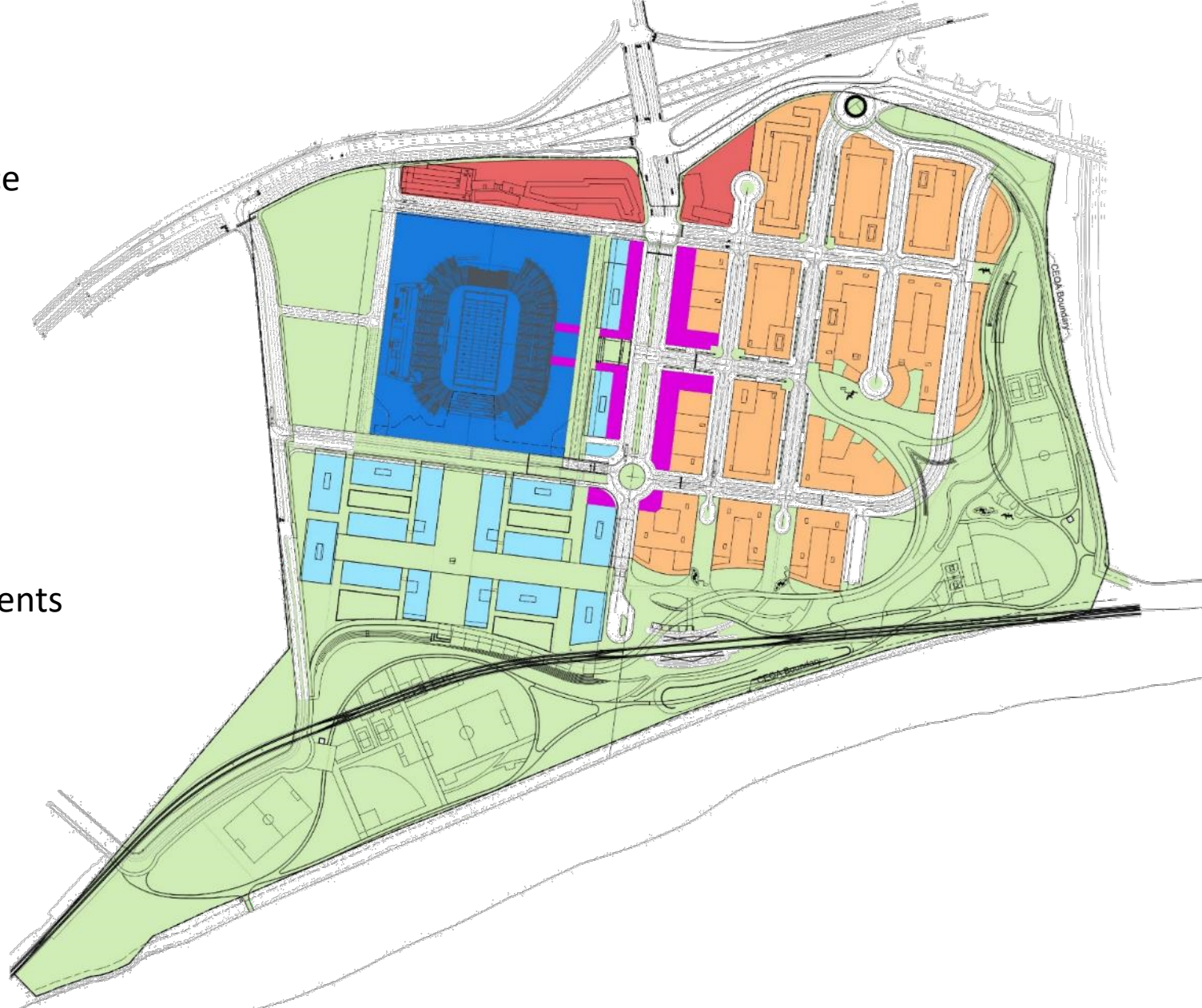
- 83 Acres of open space
- 1.6 M GSF of Campus Space
- 35,000 Seat Stadium
- 4,600 Residential Units
- 400 Hotel Rooms
- 95,000 GSF of Retail Space





# Project overview

- 83 Acres of open space
- 1.6 M GSF of Campus Space
- 35,000 Seat Stadium
- 4,600 Residential Units
- 400 Hotel Rooms
- 95,000 GSF of Retail Space
- 15,000 Additional FTE Students





# Potential impacts

## Potentially significant impacts

Aesthetics

Air Quality

Biological Resources

Cultural Resources

Energy

Geology & Soils

Greenhouse Gas  
Emissions

Hazards & Hazardous  
Substances

Hydrology & Water Quality

Land Use Planning

Mineral Resources

Noise

Population & Housing

Public Services

Recreation

Transportation

Tribal Cultural Resources

Utilities & Service Systems

Wildfire

## No impact

Agriculture and Forestry Resources



SAN DIEGO STATE  
UNIVERSITY



# Next Steps

## Draft EIR

- Summer 2019
- Draft EIR will include:
  - Consideration of scoping comments
  - Fuller description of the project
  - Description and analysis of alternatives
  - Analysis of impacts
  - Identification of significant impacts
  - Mitigation measures
- Web and hard copies
- 60 day comment period





# Next Steps

## Final EIR

- FEIR will include:
  - Response to every comment
  - Changes will be highlighted
- Approval: January 2020

## CSU Board of Trustees

- Open meeting
- Speaker opportunities
- Materials posted 10 days prior



SAN DIEGO STATE  
UNIVERSITY





# Providing input on the NOP

## Provide comments in person

### January 29

3:30 – 5:30 PM

Parma Payne Goodall Alumni Center  
SDSU

### January 30

5:30 - 7:30 PM

Mission Valley Marriott  
Cabrillo Ballroom

### February 7

5:00 to 7:00 PM

Mission Valley Marriott  
Cabrillo Ballroom

---

### Mail comments to:

Laura Shinn, Director of Planning  
Planning, Design, and Construction  
San Diego State University  
5500 Campanile Drive  
San Diego, California 92182-1624

### Email comments to:

mvcomments@sdsu.edu

**Deadline:  
February 19, 2019**



SAN DIEGO STATE  
UNIVERSITY

Visit [sdsu.edu/missionvalley](https://sdsu.edu/missionvalley) to view all related materials