

SDSU Mission Valley

River Park Master Plan January 13, 2020



SAN DIEGO STATE
UNIVERSITY



PROJECT DESIGN CONSULTANTS



SCHMIDT
DESIGN
GROUP

SDSU Mission Valley - Progress

- Draft EIR Comment Period: August 5 - October 3, 2019
- City Council Meeting: November 18
 - *Directing City Attorney's Office to draft PSA*
- CSU Board of Trustees: January 28-29, 2020
- City Council: February 2020
- Close of Escrow: March 27, 2020 (Estimated)
- Groundbreaking: April 2020
- Stadium Completion: August 2022
- River Park Completion: August 2023



- **July 27, 2019** Public Workshop, design principles, program, and park design exercise
- **August 30, 2019** Park Advisory Group – Design principles, program, and interpretive education discussion
- **September 27, 2019** Park Advisory Group – Review and discussion of Preliminary Park Master Plan
- **December 3, 2019** Park Advisory Group, review and discussion of Draft Park Master Plan
- **December 14, 2019** Public Workshop, review of Draft Park Master Plan and breakout stations
- **January 7, 2020** Presentation of Master Plan to the Mission Valley Planning Group
- **January 7, 2020** Presentation of Master Plan to the Navajo Planning Group
- Continued Park Advisory meetings in **2020**, Planning Groups and public presentations as needed as well.

SDSU Mission Valley

River Park Advisory Committee



SDSU Mission Valley

River Park Advisory Group Members include:

- Sierra Club
- League of Women Voters
- Navajo/Allied Gardens Planning Group
- San Diego River Conservancy
- Kumeyaay Diegueno Land Conservancy
- City of San Diego Parks and Recreation
- Mission Valley Community Planning Group
- SDSU Faculty: Department of History, Geological Sciences, Environmental Engineering, Environmental Sciences
- San Diego River Park Foundation
- San Diego County Water Authority
- San Diego Audubon Society
- H.G. Fenton
- San Diego Coastkeeper
- SDSU Associated Students
- Design industry professional
- Community Members

SDSU Mission Valley

Public Workshop July 27, 2019



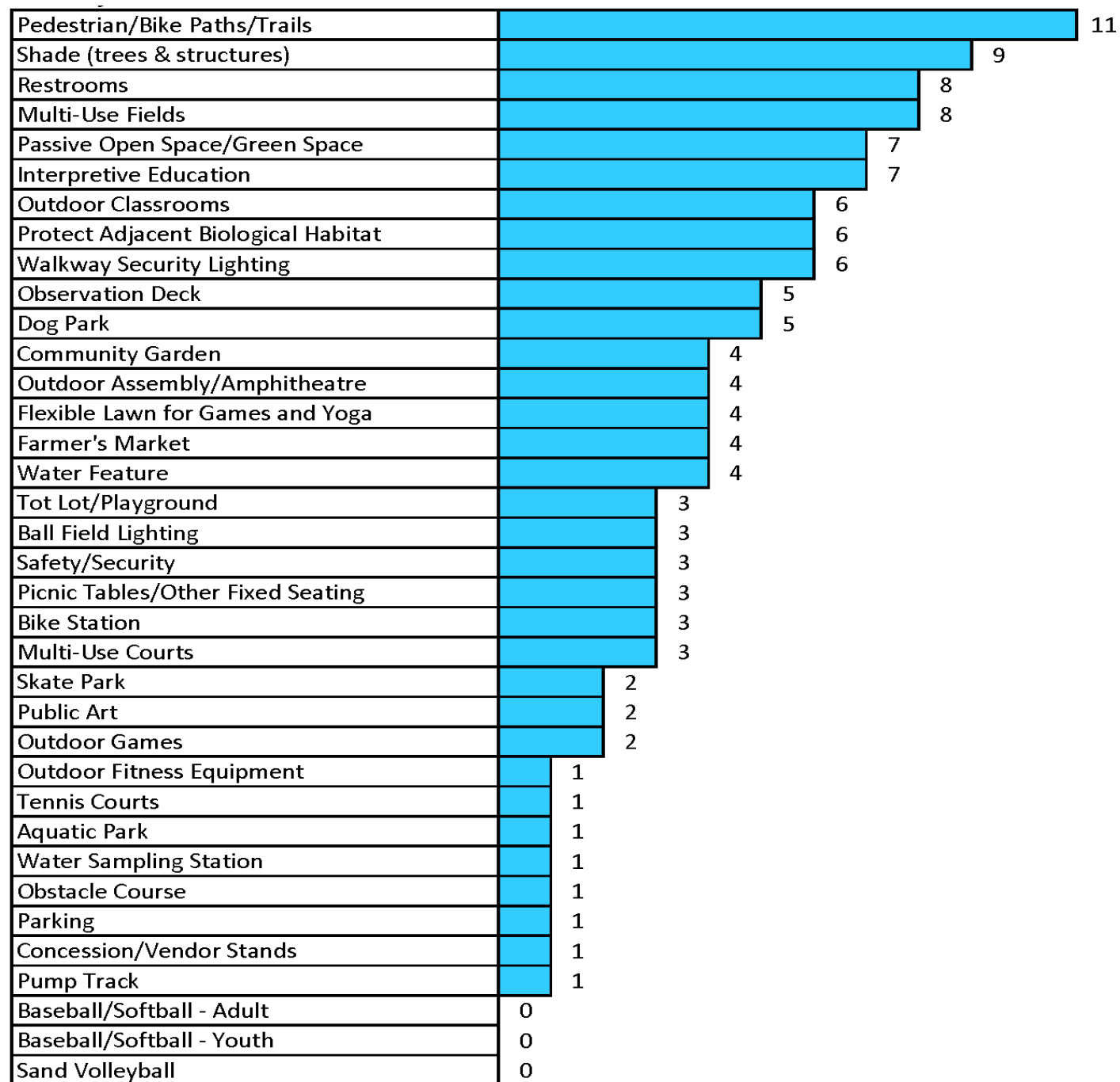
SDSU Mission Valley

Public Workshop July 27, 2019



Visioning and Brainstorming

Amenities prioritized at July 27, 2019 Workshop



- Pedestrian/Bike Paths/Trails
- Multi-Use Fields
- Shade (Trees & Structures)
- Restrooms
- Passive Open Space/Green Space
- Tot Lot/Children's Playground
- Interpretive Education
- Outdoor Classrooms
- Protect Adjacent Biological Habitat
- Walkway Security Lighting
- Community Garden
- Observation Decks



SDSU Mission Valley

Public Workshop July 27, 2019



Amenities and Park Design Exercise

SDSU Mission Valley

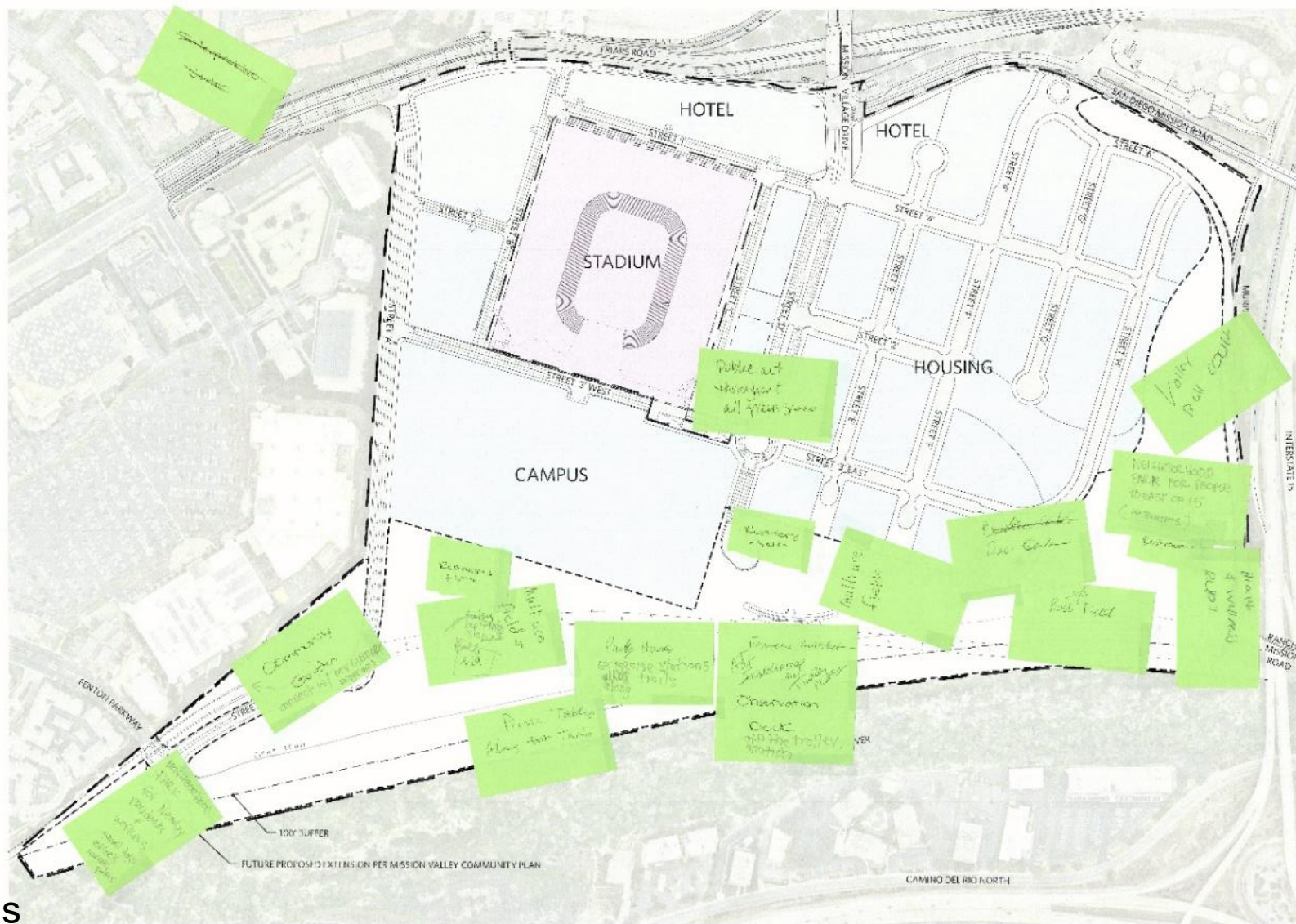
Public Workshop July 27, 2019



Park Design Ideas

SDSU Mission Valley

Public Workshop July 27, 2019



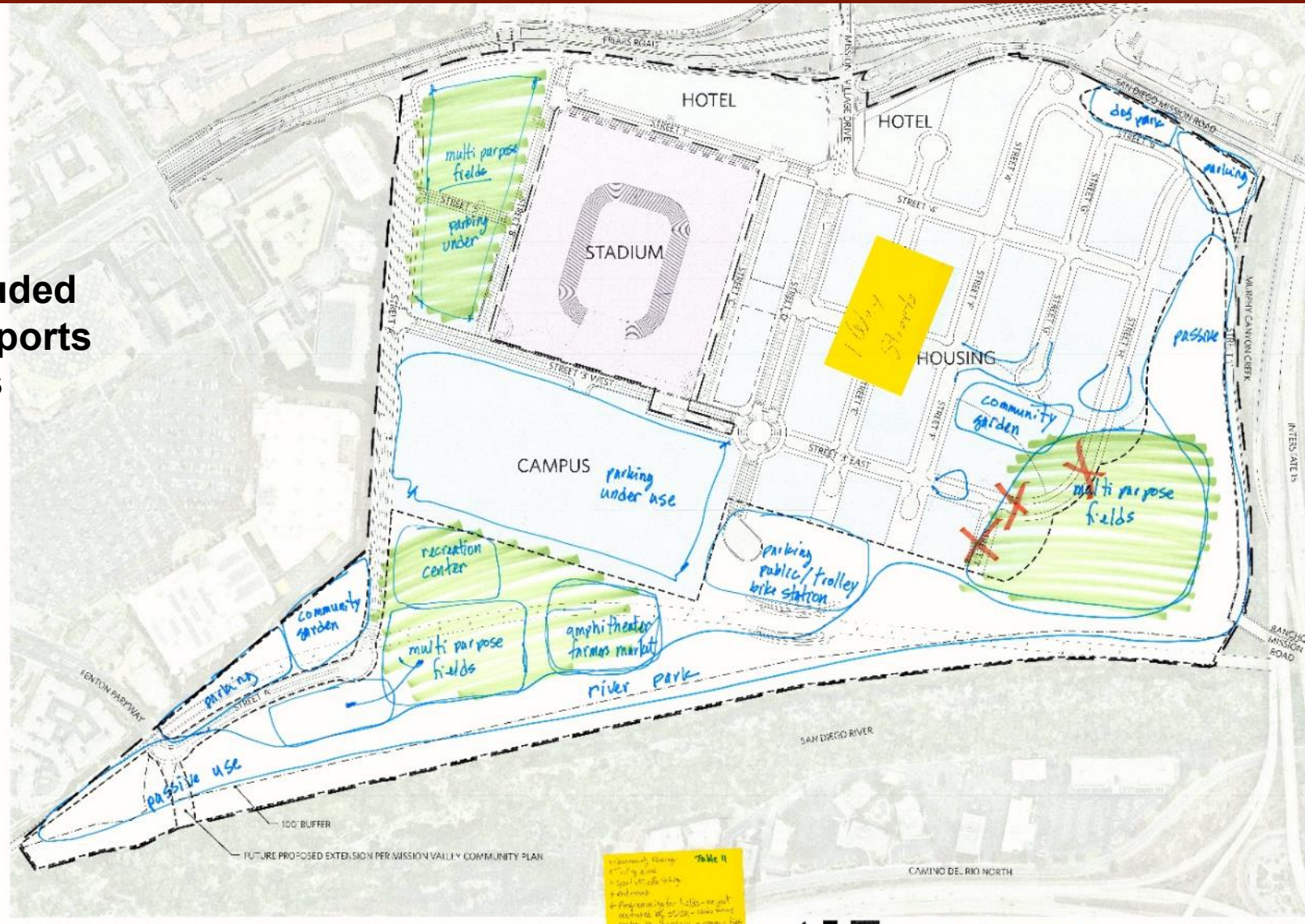
Park Design Ideas

SDSU Mission Valley

Public Workshop July 27, 2019

Public Workshop July 27, 2019

All designs included Multi-Purpose Sports Fields and Trails



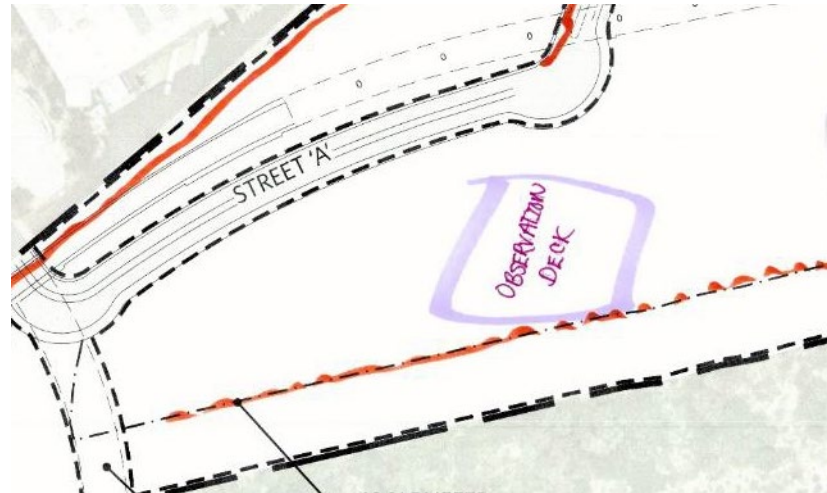
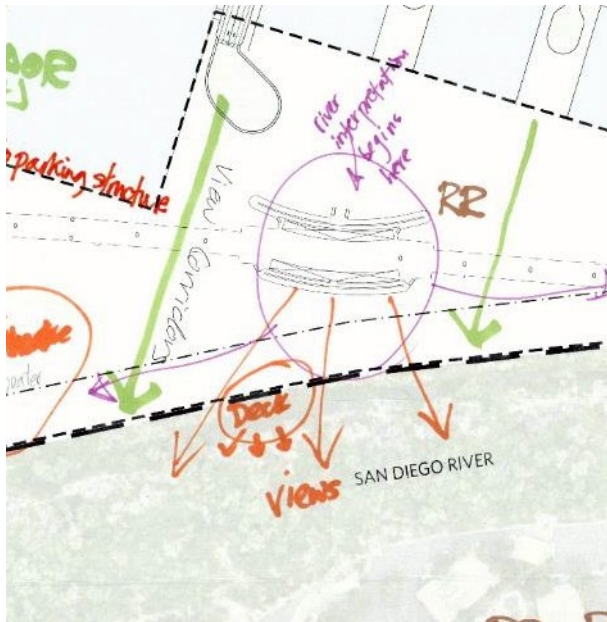
SDSU MISSION VALLEY SITE - TABLE II

Park Design Ideas

SDSU Mission Valley

Public Workshop July 27, 2019

Comments regarding observation decks for viewing wildlife, and the River.

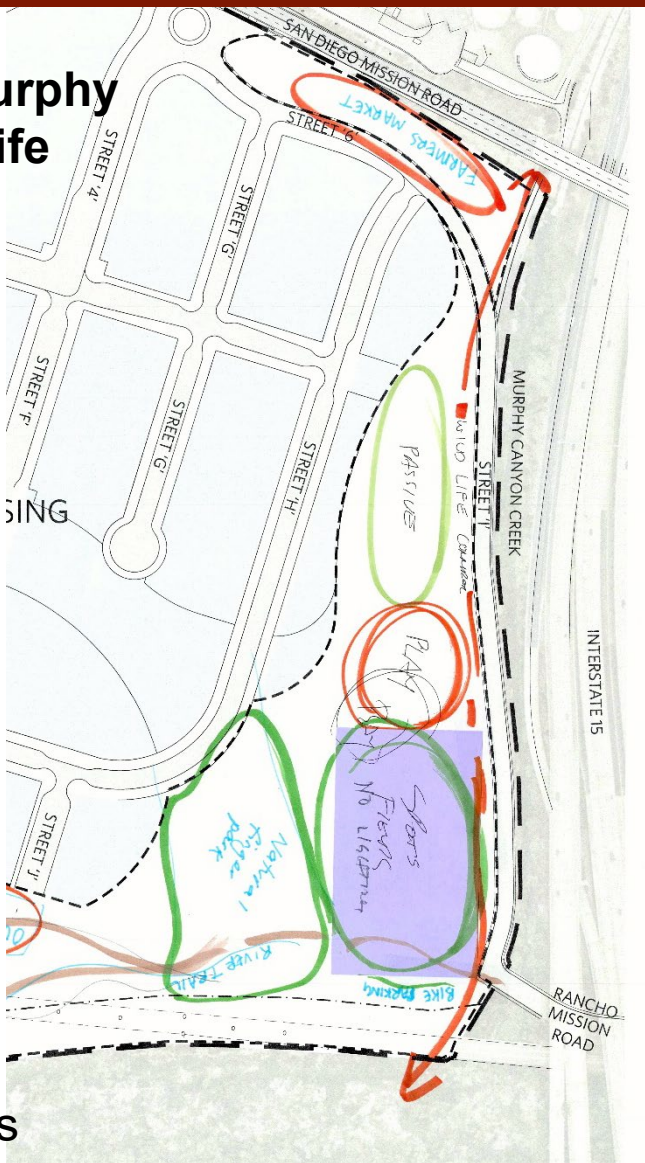


Park Design Ideas

SDSU Mission Valley

Public Workshop July 27, 2019

Sensitivity to Murphy Creek and Wildlife Movement



Park Design Ideas



SDSU Mission Valley

Public Workshop December 14, 2019



SDSU Mission Valley

Public Workshop December 14, 2019



SDSU Mission Valley

Design principles for the River Park

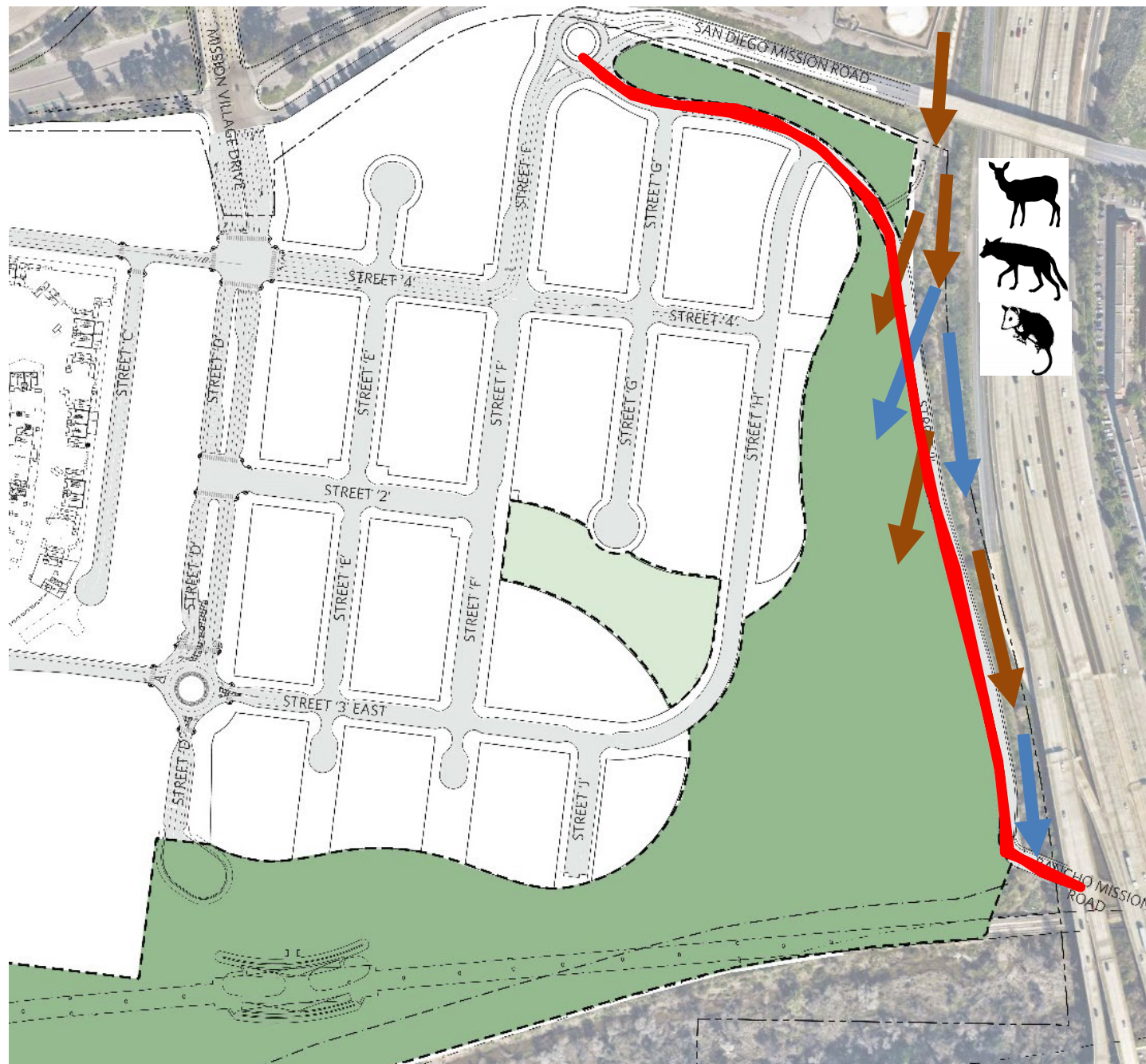
- A sustainable space, natural, and native
- Accessible to all
- Flexible allowing multi-use
- Create a “connection” to the San Diego River
- Balancing active and passive recreation
- Provide a living and learning laboratory



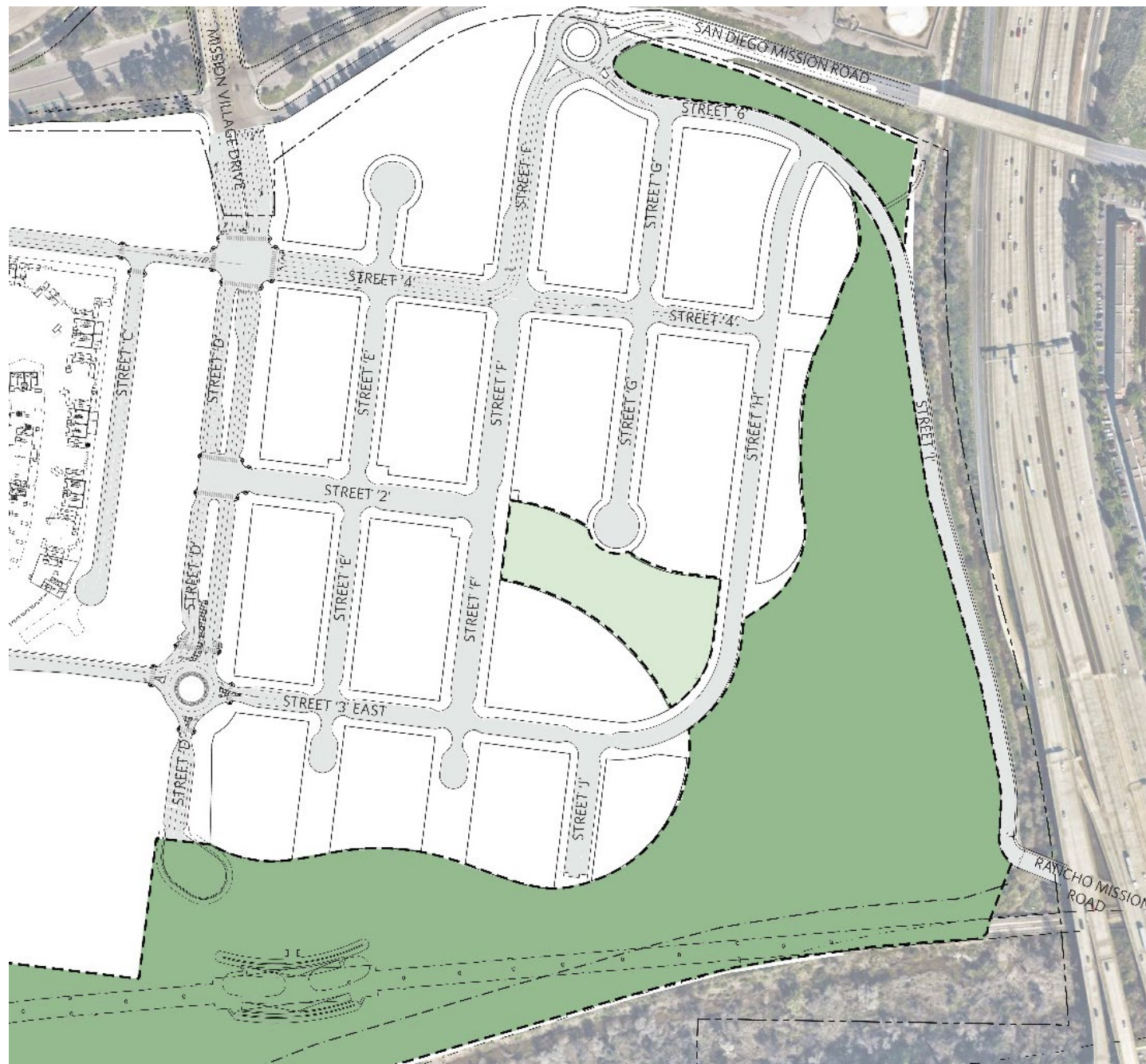


Previous Plan

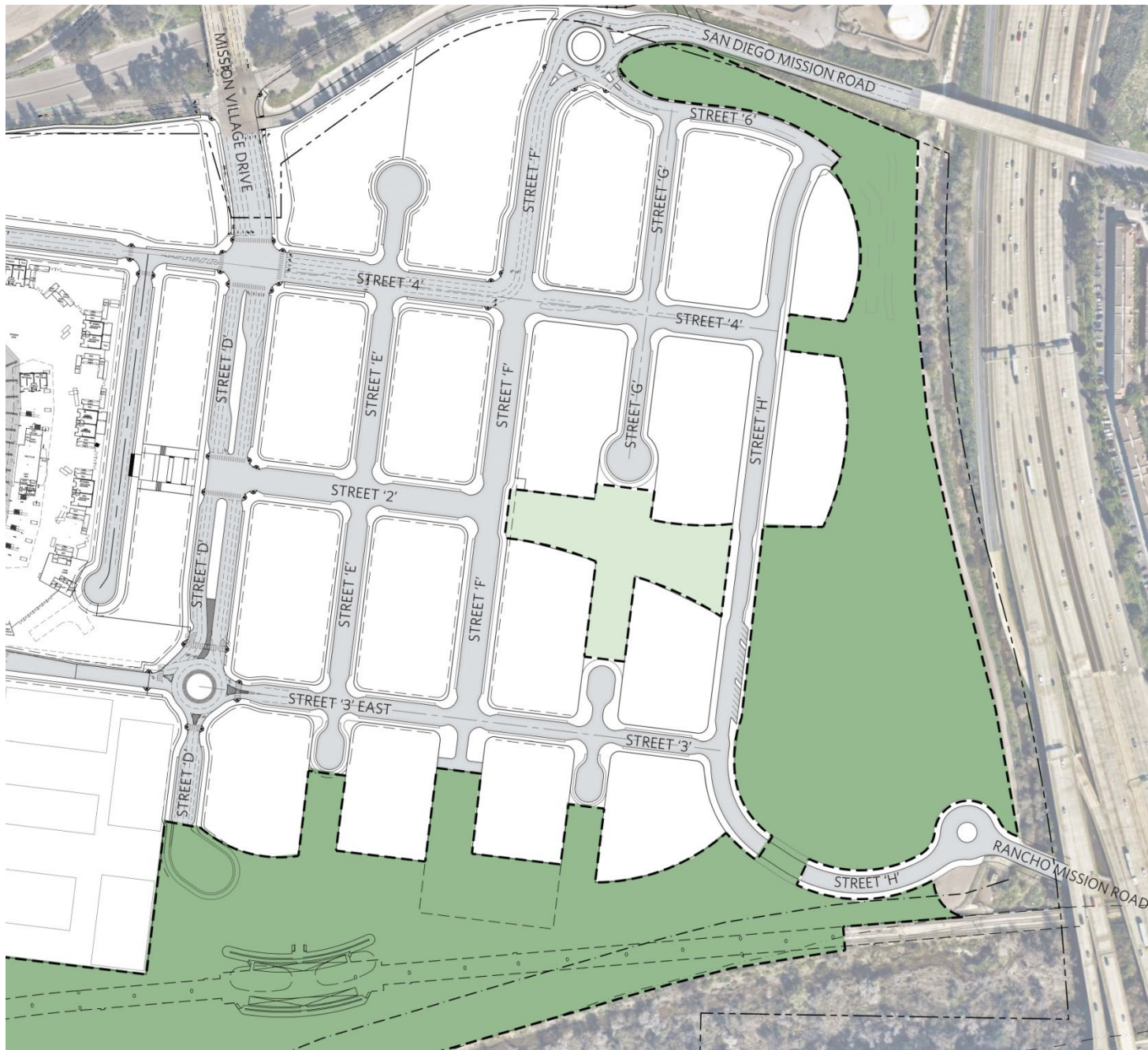
Previous Plan



Previous Plan



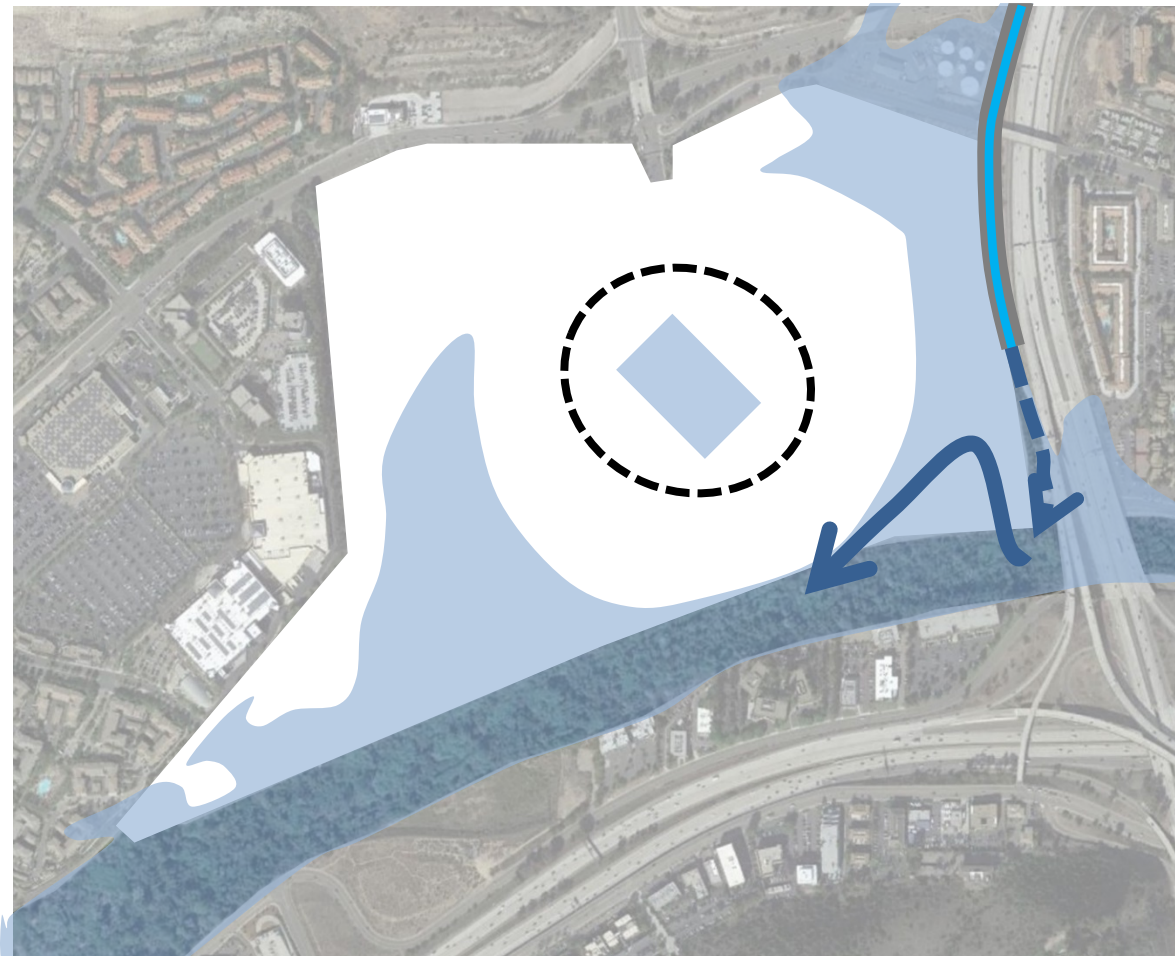
Current Plan



Current Plan



OPEN SPACE FIRST... HYDROLOGY CONCEPT



CURRENT 100 YEAR FLOOD CONDITION



PROPOSED 100 YEAR FLOOD CONDITION

OPEN SPACE FIRST... RIVER ENGAGEMENT

- RIVER TO UPLANDS
- UPLANDS TO RIVER

**CREATE
MEANINGFUL
INTERFACE**

SDSU Mission Valley



**Park land and open space will act like a “green sponge”,
absorbing water and filtering it**






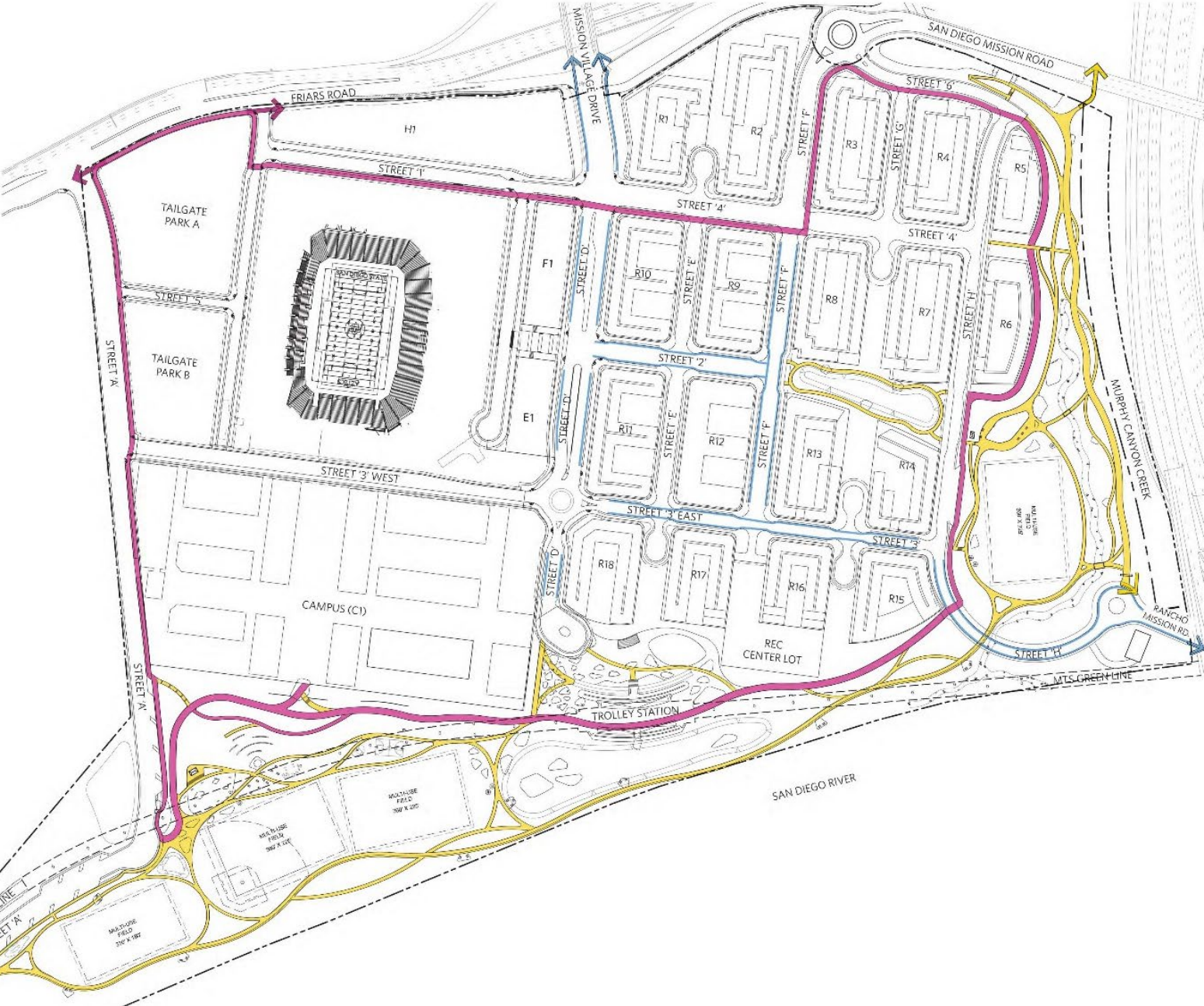
Existing Conditions

Park Master Plan



HIKE & BIKE CIRCULATION - 10.8 AC/8.2 MI




TRAILS/LOOP		ACRES	MILES
	HIKE & BIKE LOOP	4.2	1.9
	HIKE & BIKE TRAILS	5.5	4.5
SUBTOTAL		9.7	6.4
BIKE			
	BIKE LANE	1.1	1.8
SUBTOTAL		1.1	1.8
TOTAL		10.8	8.2

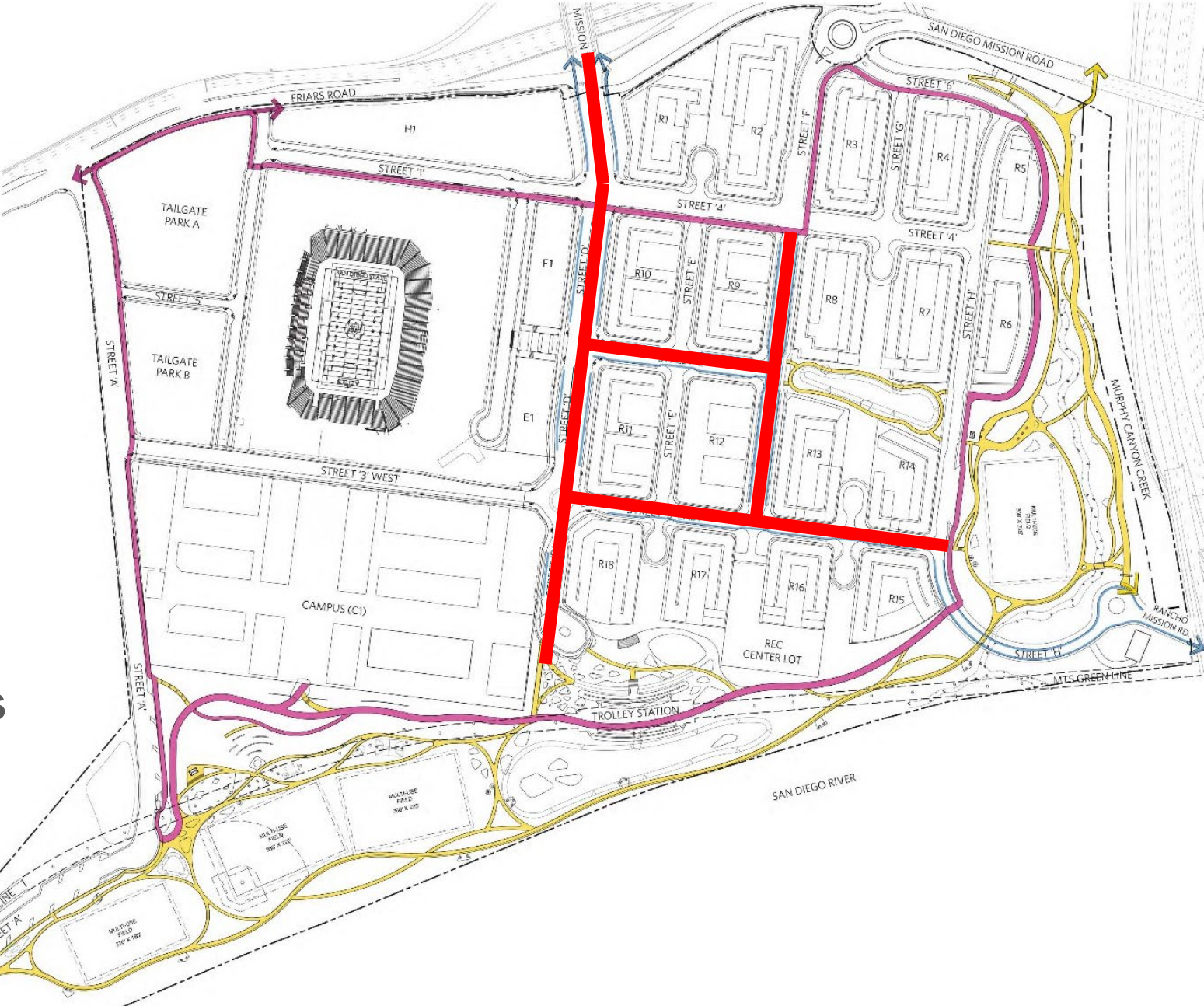


Hike and Bike
Circulation

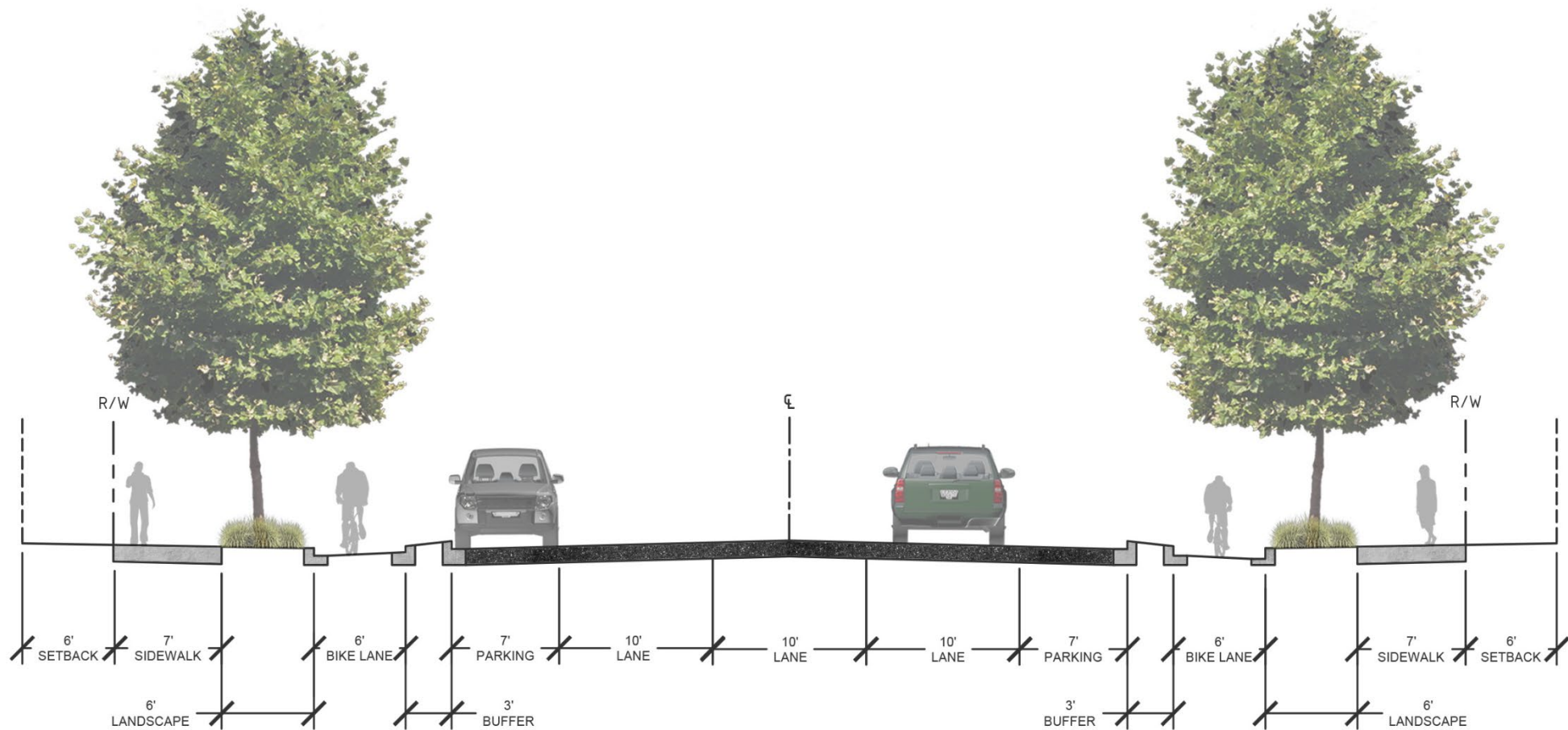


HIKE & BIKE CIRCULATION - 10.8 AC/8.2 MI

TRAILS/LOOP	ACRES	MILES
 HIKE & BIKE LOOP	4.2	1.9
 HIKE & BIKE TRAILS	5.5	4.5
SUBTOTAL	9.7	6.4
BIKE		
 BIKE LANE	1.1	1.8
SUBTOTAL	1.1	1.8
TOTAL	10.8	8.2



Protected Bike Lanes



Protected bike lanes proposed on Streets D, F, 2, 3, and Mission Village Drive entry



Park
Parking:

83 spaces

Drop off

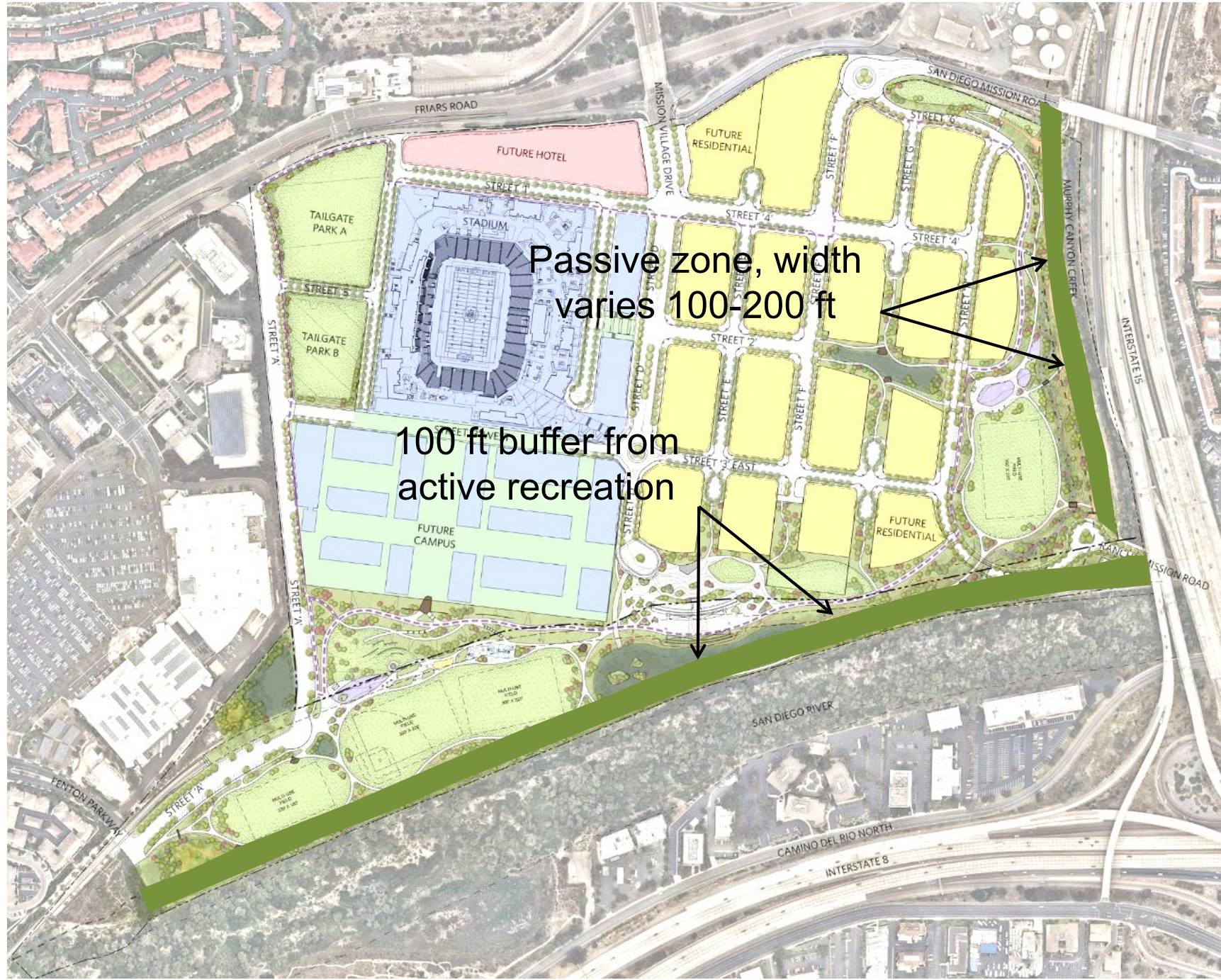


Park Master Plan



Initial
Completion
Plan





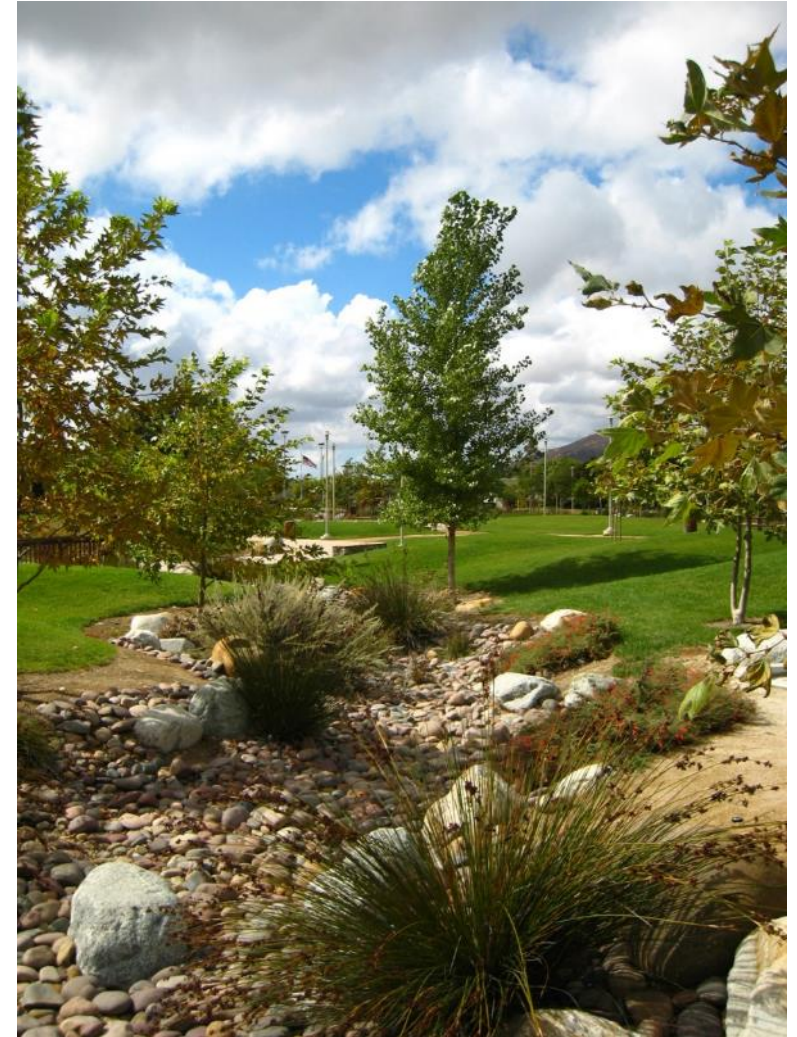
Passive zone, width
varies 100-200 ft

100 ft buffer from
active recreation



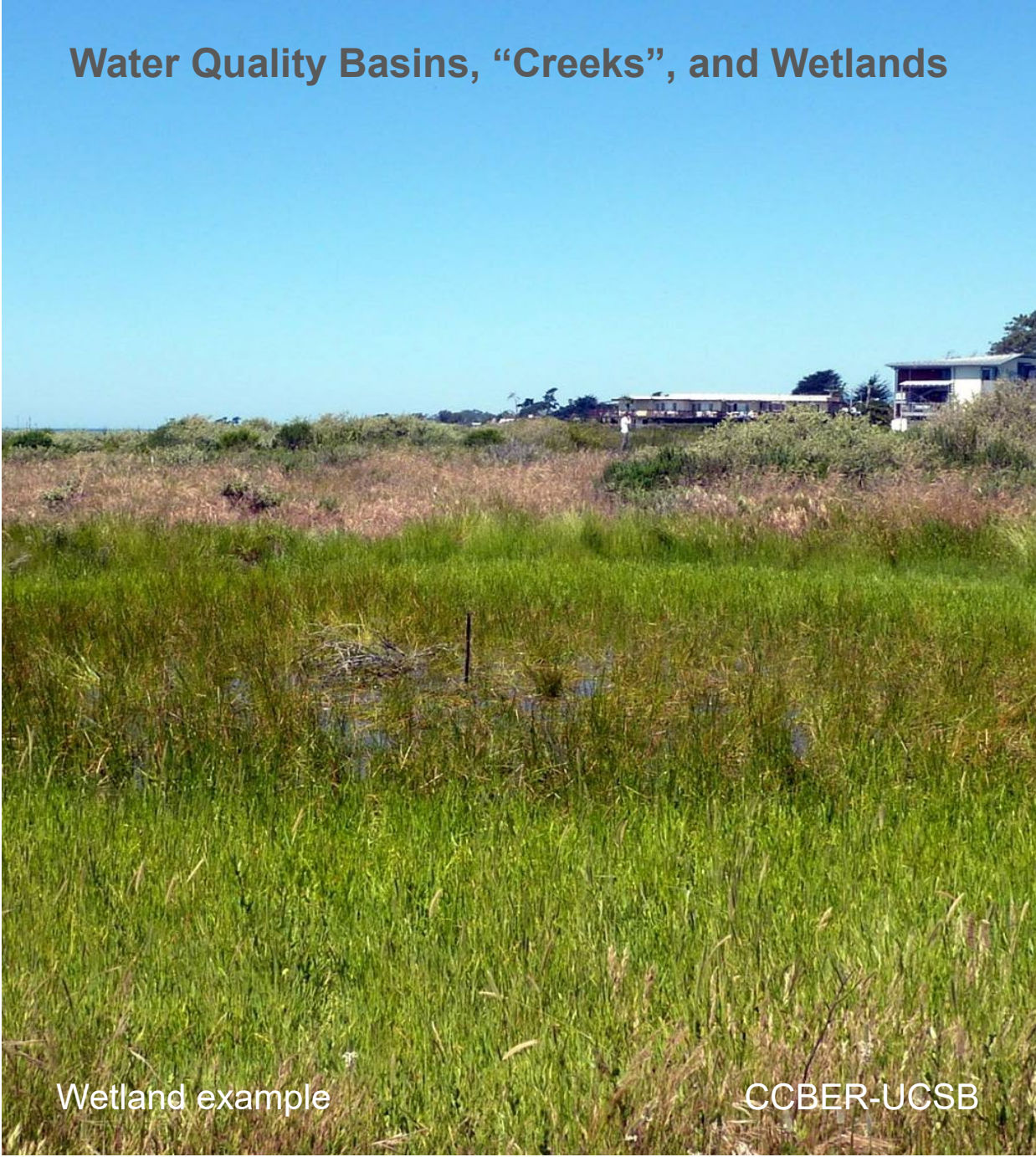
“Connecting” with the River

Water Quality Basins, “Creeks”, and Wetlands create a “River like” character



Briercrest Park, La Mesa

Water Quality Basins, “Creeks”, and Wetlands



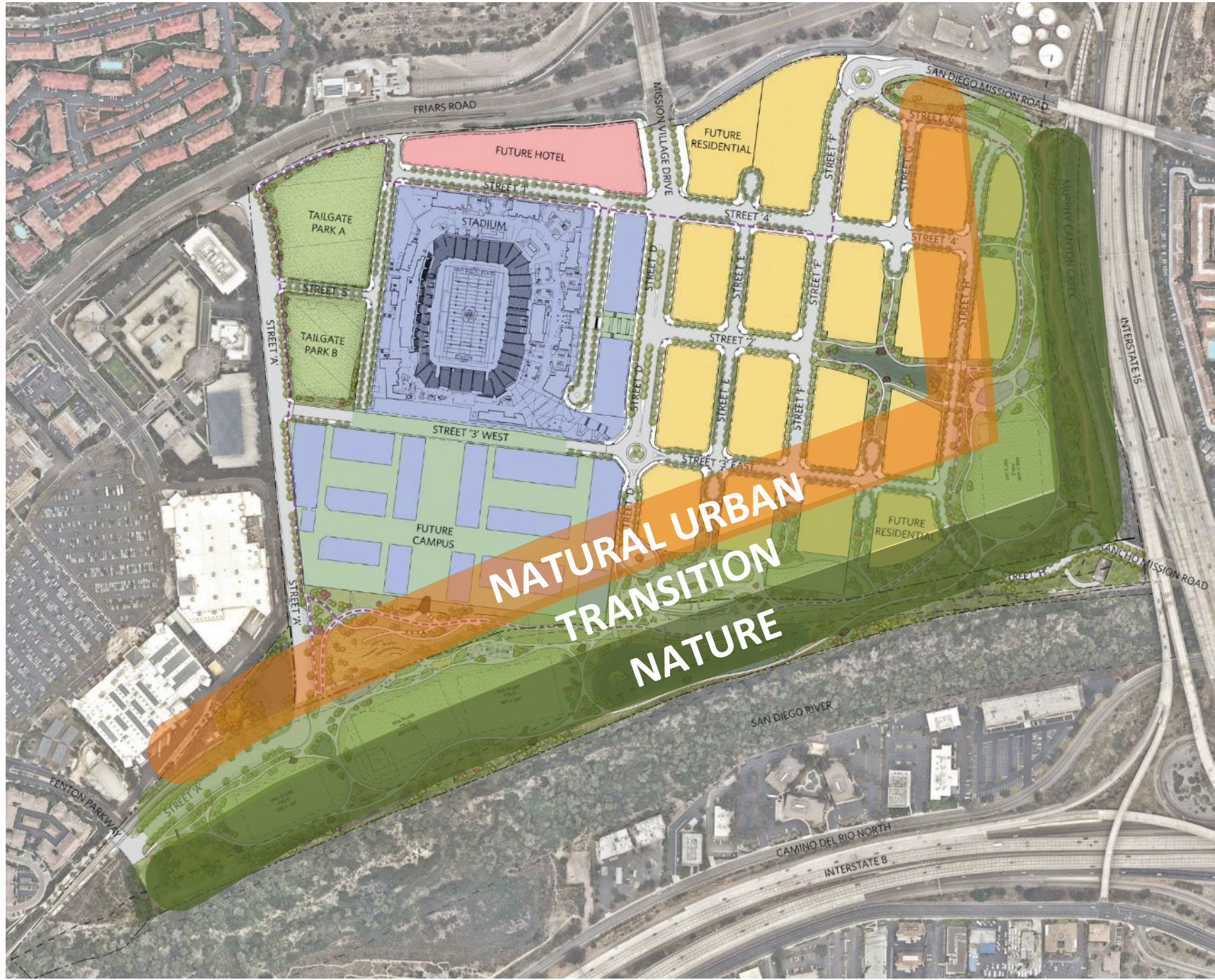
Wetland example

CCBER-UCSB



Paradise Creek

Landscape Character



Native and Transitional Plantings Character



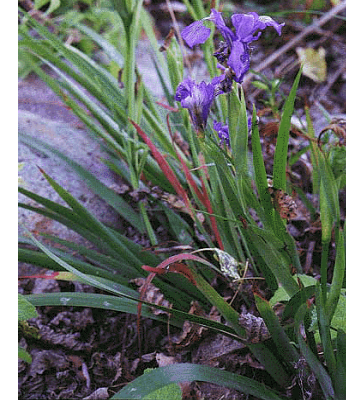
Mimulus aurantiacus –
Monkey Flower



Muhlenbergia rigens –
Calif. Deergrass



Baccharis salicifolia –
Mulefat



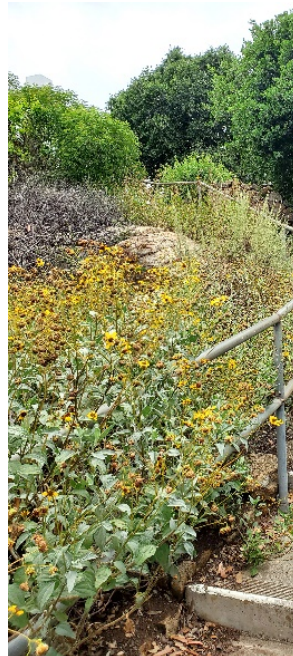
Iris douglasiana –
Douglas Iris



Heteromeles arbutifolia - Toyon



Eschscholzia californica -
California Poppy



Encelia californica –
Coast Sunflower



Lynothamus floribundus -
Catalina Ironwood



Platanus racemosa -
Calif Sycamore



Quercus agrifolia – Coast Live Oak

Water Quality Basins Planting Character



Carex pansa



Carex praegracili



Juncus effusus



Leymus triticoides – Creeping Wild Rye

Wetlands Planting Character



Artemisia dracunculus -
Russian Tarragon



Juncus acutus –Spiny Rush



Iva hayesiana – San Diego
Marsh Elder



Salix exigua –
Black Willow

Greenbelt Example Trees with Native Character



Quercus agrifolia – Coast Live Oak



Quercus ilex – Holly Oak



Platanus racemosa –
Calif Sycamore



Cercis occidentalis – Western Redbud

Urban Greenbelt Example Trees



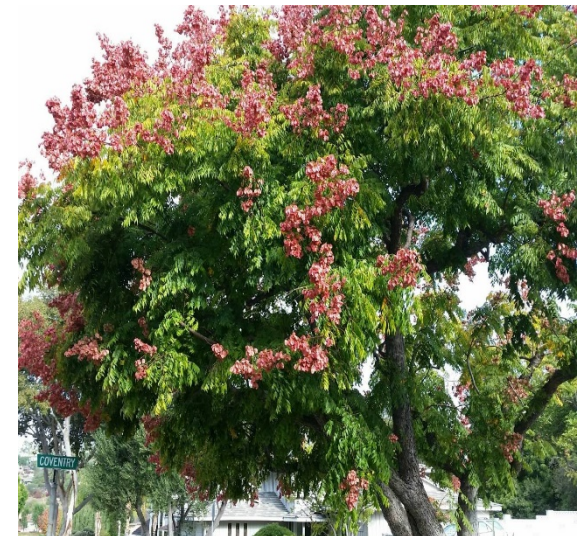
Pistacia chinensis – Chinese Pistache



Jacaranda mimosifolia - Jacaranda



Podocarpus gracillior – Fern Pine



Koelreuteria bipinnata – Golden Rain Tree

Food Forests Edge Includes Selected Edibles Mixed Mediterranean Plantings



Ficus carica – Edible Fig



Arbutus unedo – Strawberry Tree



Eriobotrya japonica – Loquat



Thyme



Nagami Kumquat



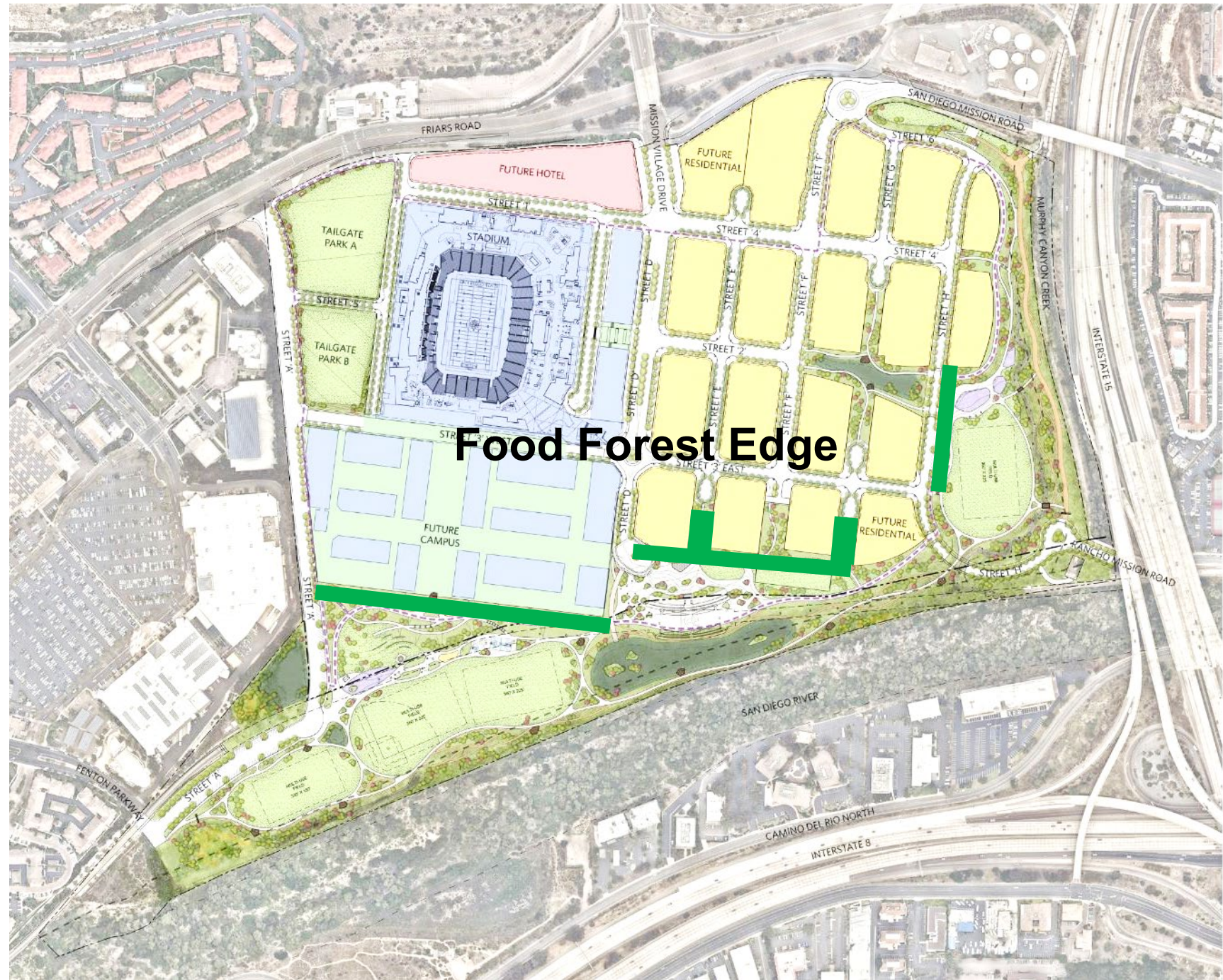
Rhus integrifolia – Lemonade Berry



Rosemary



Avocado

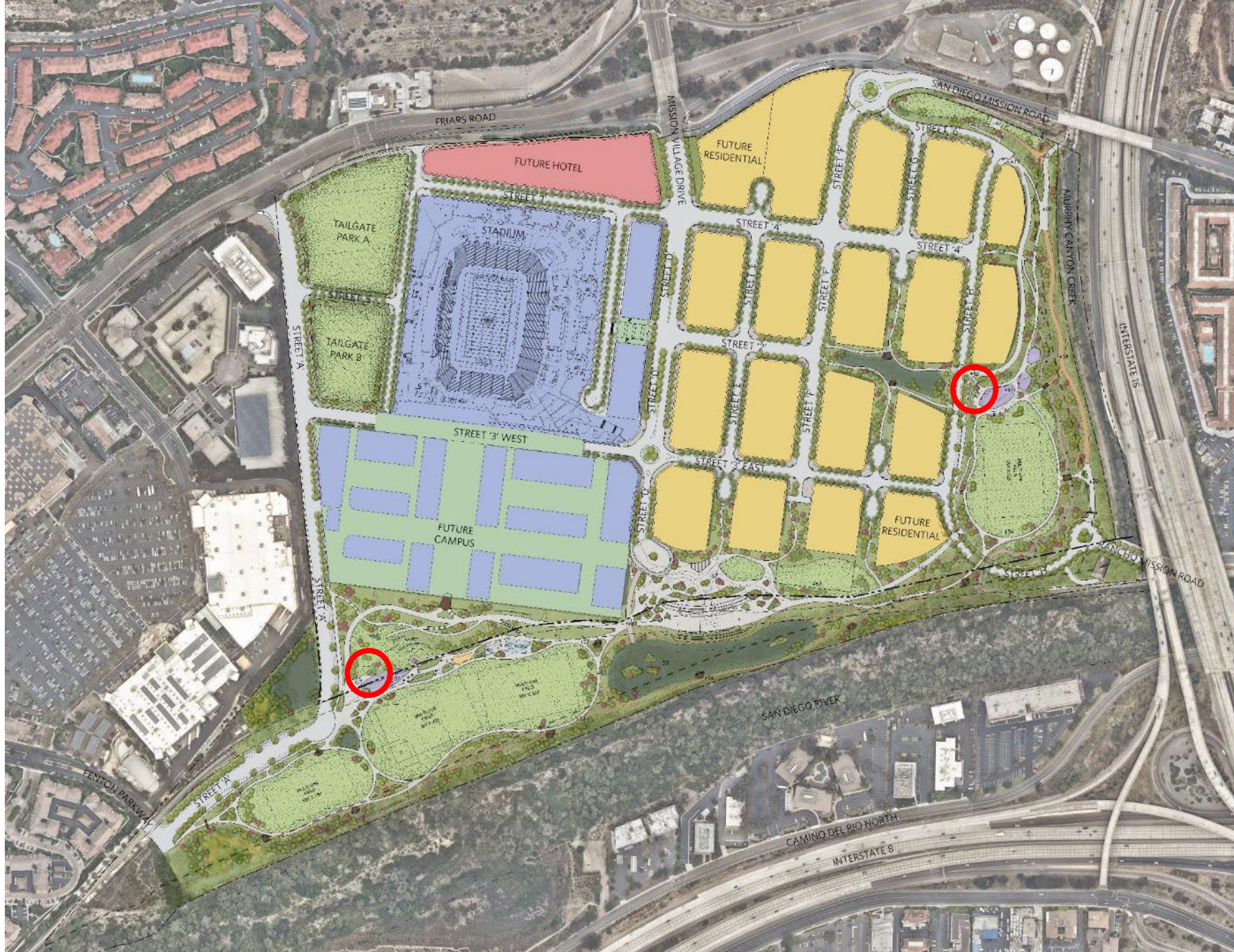


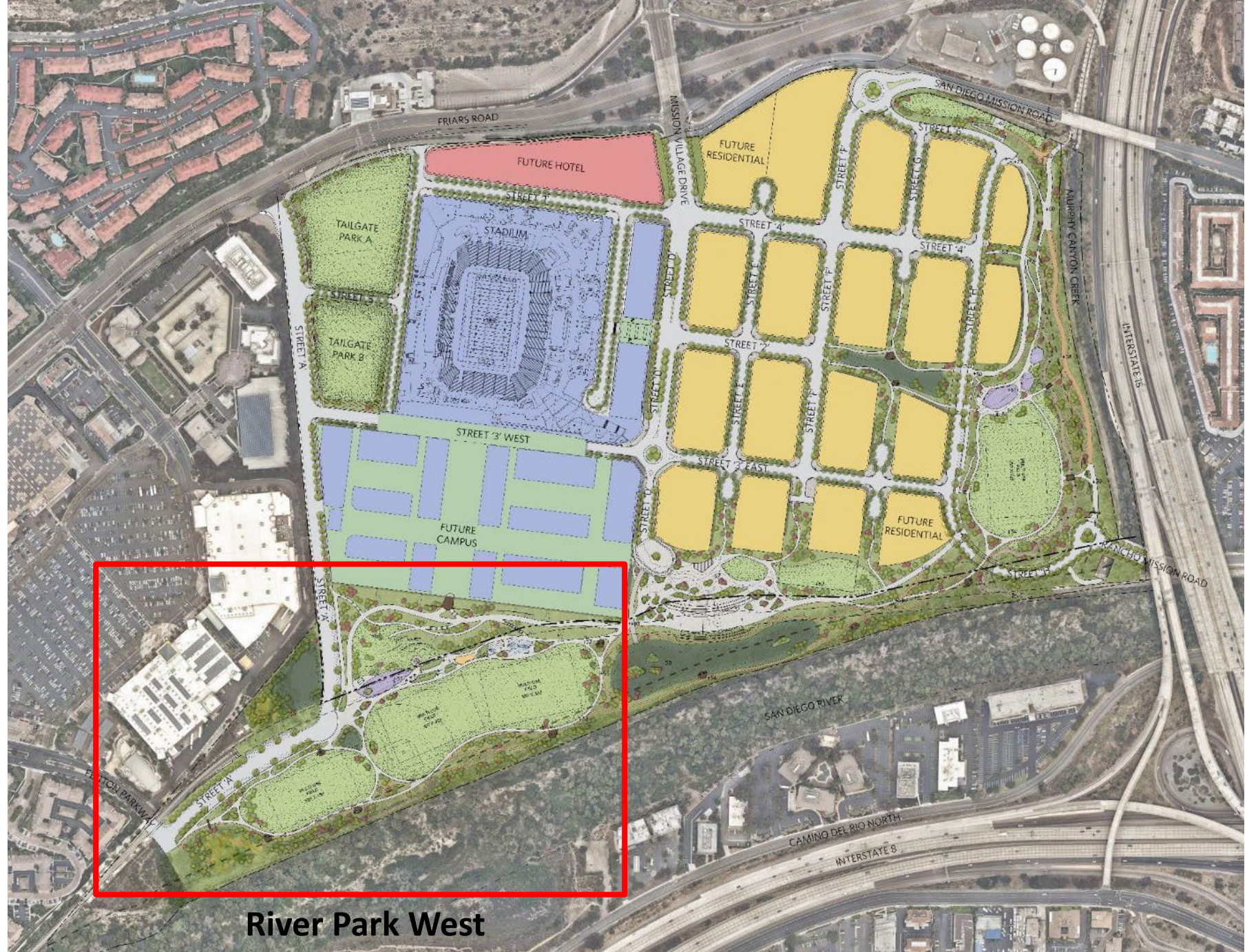
Food Forest Edge



6 Multi-use Fields

**2 Restrooms/Storage
Buildings**

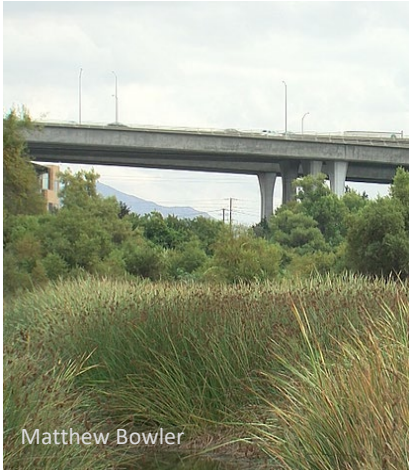


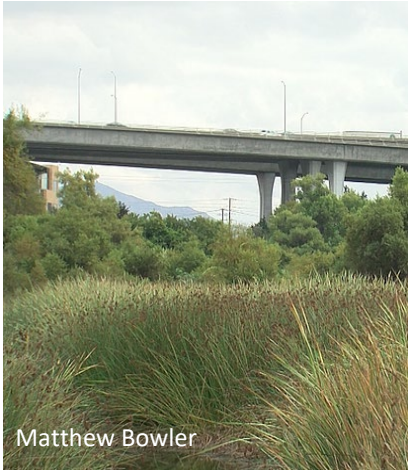
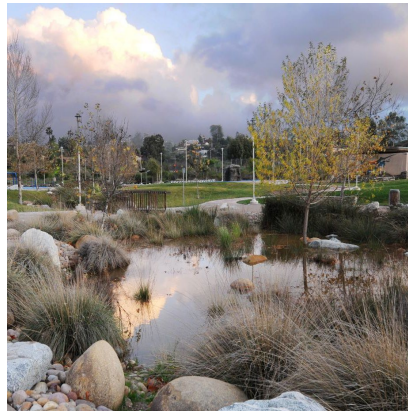


River Park West



River Park West





Matthew Bowler





Existing Conditions



Ribbon of Shade



STREET 'A'

Play and Picnic Zone

MULTI-USE
FIELD
360' X 225'

MULTI-USE
FIELD
360' X 225'

River Park West



Children's Play, Fitness, Picnicking, Basketball, Games, etc.

Simulation Viewpoint



River Park West



Existing Conditions



Illustration



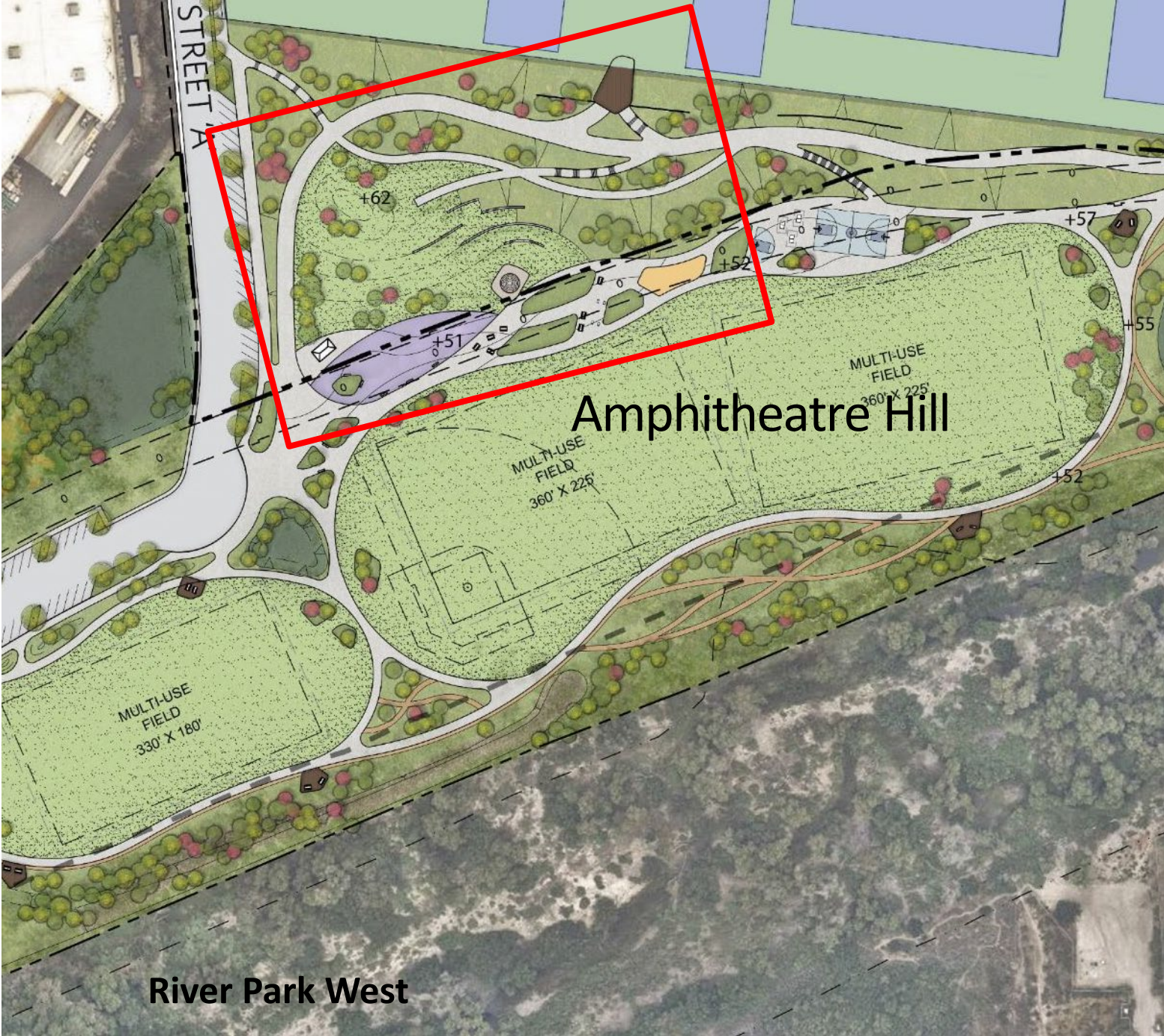
River Park West



Amphitheatre Hill at Civita



Labyrinth Stage Pad



River Park West



Master Plan Vision

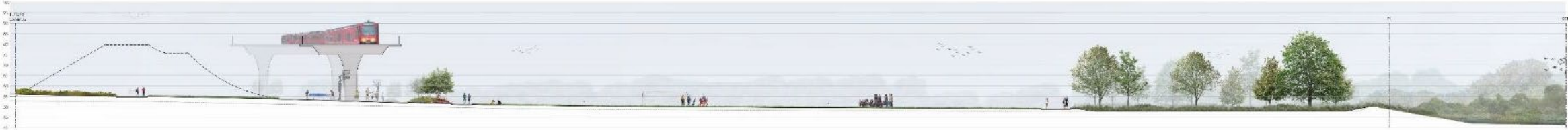


Initial Completion Plan

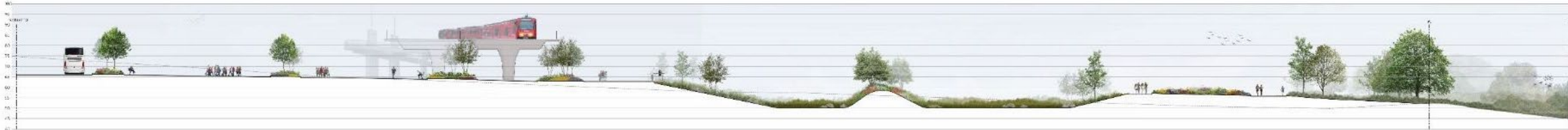
Site Sections



KEY MAP



SECTION C-C'
HORIZONTAL SCALE: 1" = 20' | VERTICAL SCALE: 1" = 20'



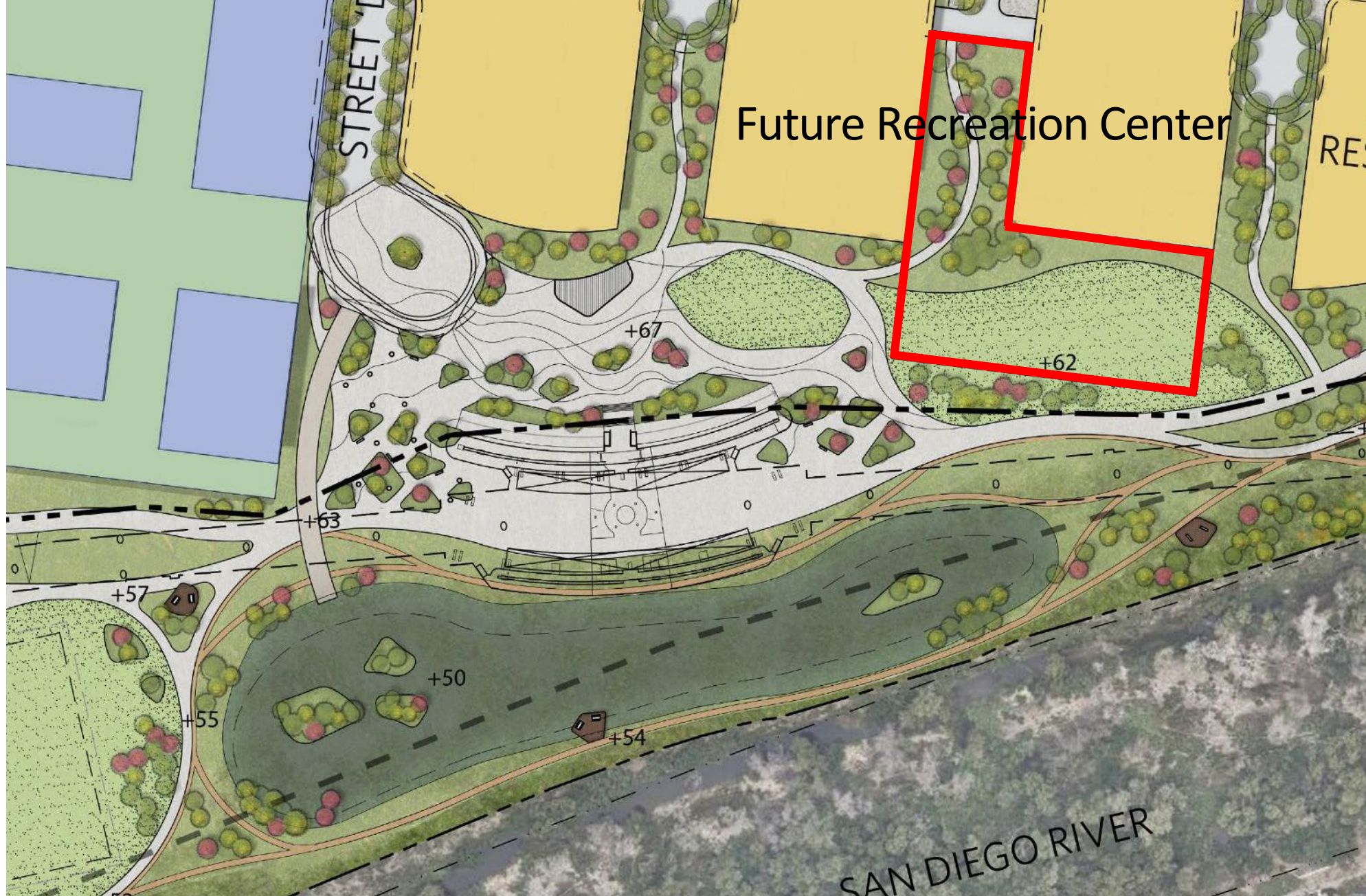
SECTION D-D'
HORIZONTAL SCALE: 1" = 20' | VERTICAL SCALE: 1" = 20'



River Park Central



River Park Central



River Park Central



Google Earth

©2018 Google

©2018 INEGI

Hazard Center Dr

Mission Center Rd

Camino De La Reina

San Diego River

800 ft



Existing islands inspired
forms within the park



Google Earth

©2018 Google

©2018 INEGI

San Diego River



800 ft



River Park Central



River Park Central

Trolley Plaza, Urban Plaza at Station example

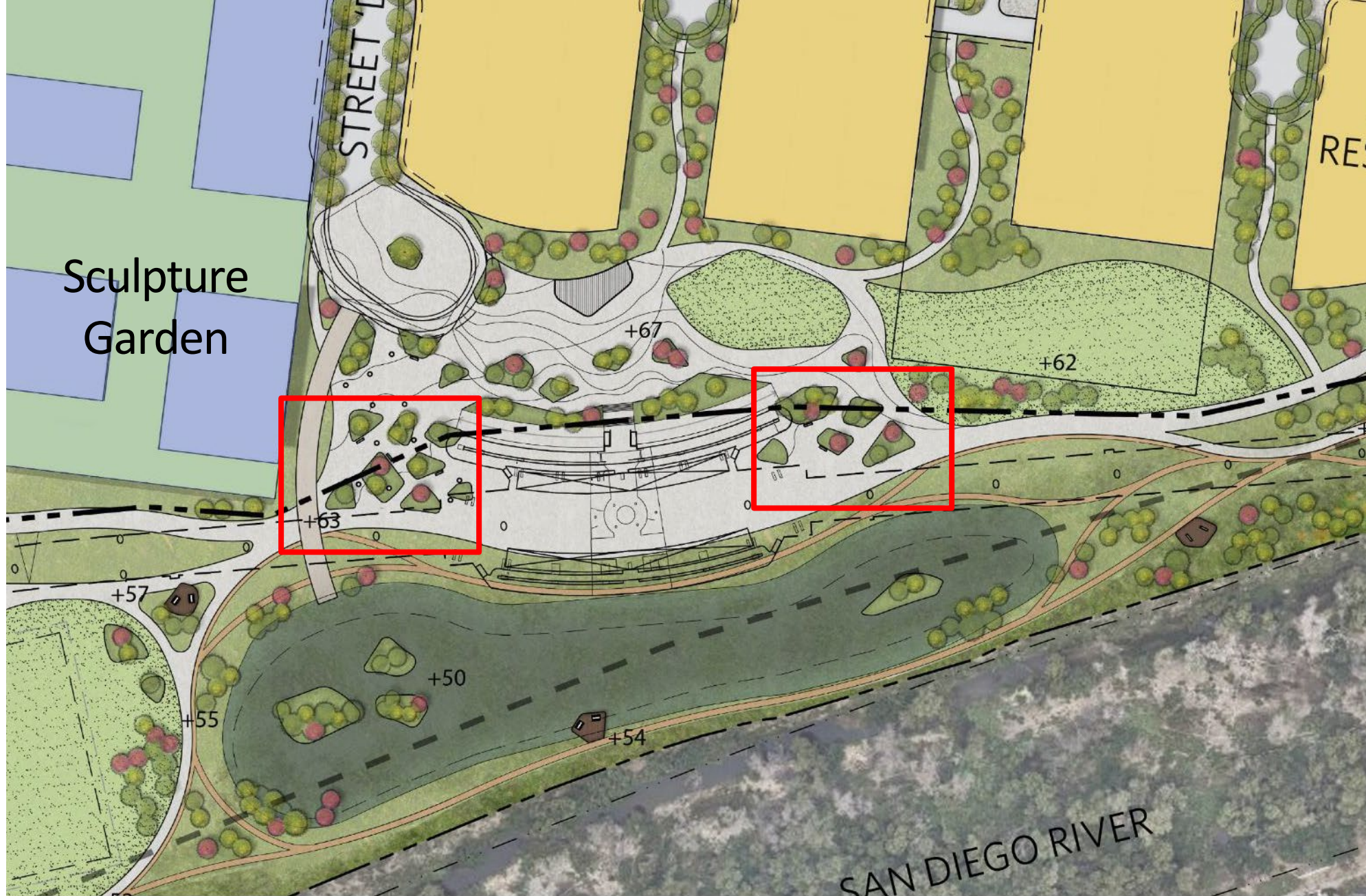
Director Park, Portland





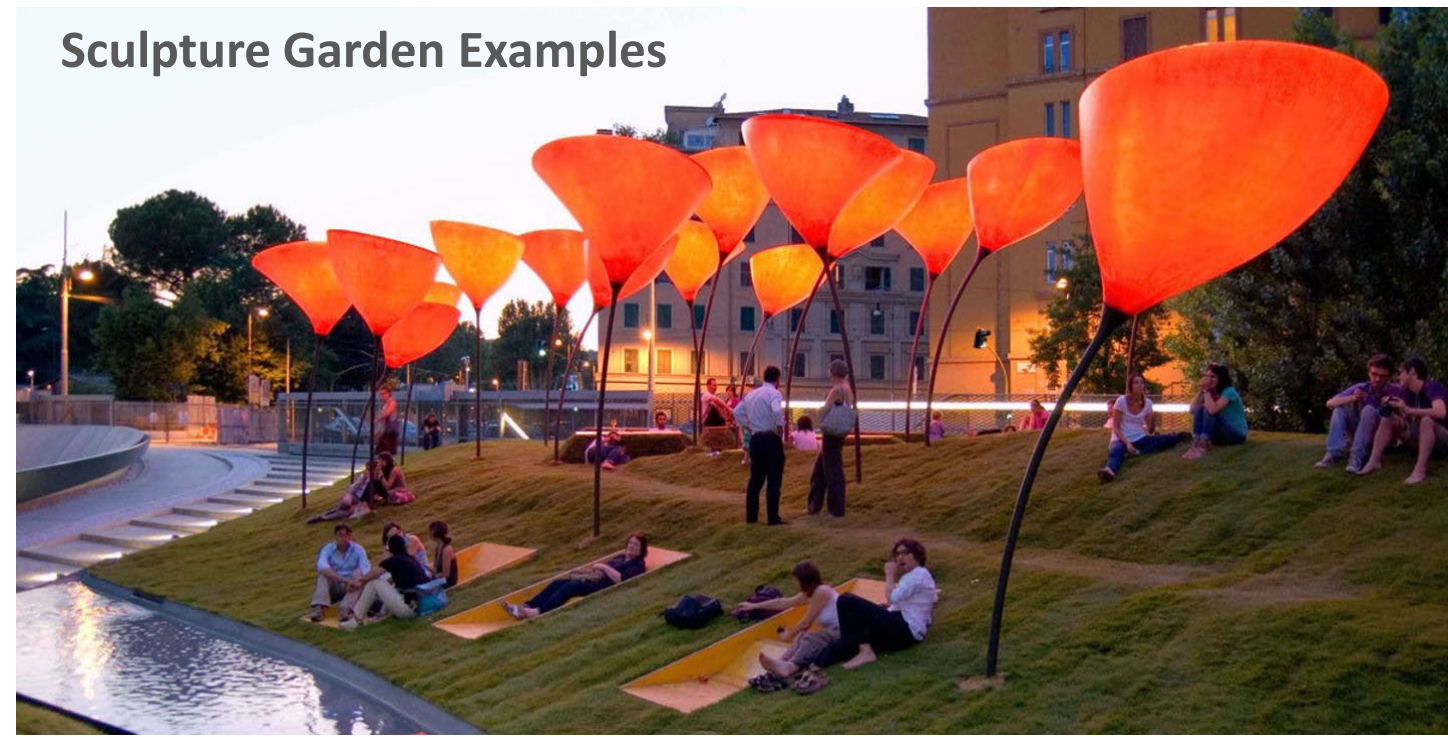
Flexible and multi-use





River Park Central

Sculpture Garden Examples





Existing Conditions



Existing Conditions



River Park Central



Doublespace Photography

Example, Underpass Park Toronto



River Park Central

Water Quality Basins



Briercrest Park, La Mesa



Lake Skinner Recreation Area

Simulation Viewpoint



River Park Central



Existing Conditions



Illustration

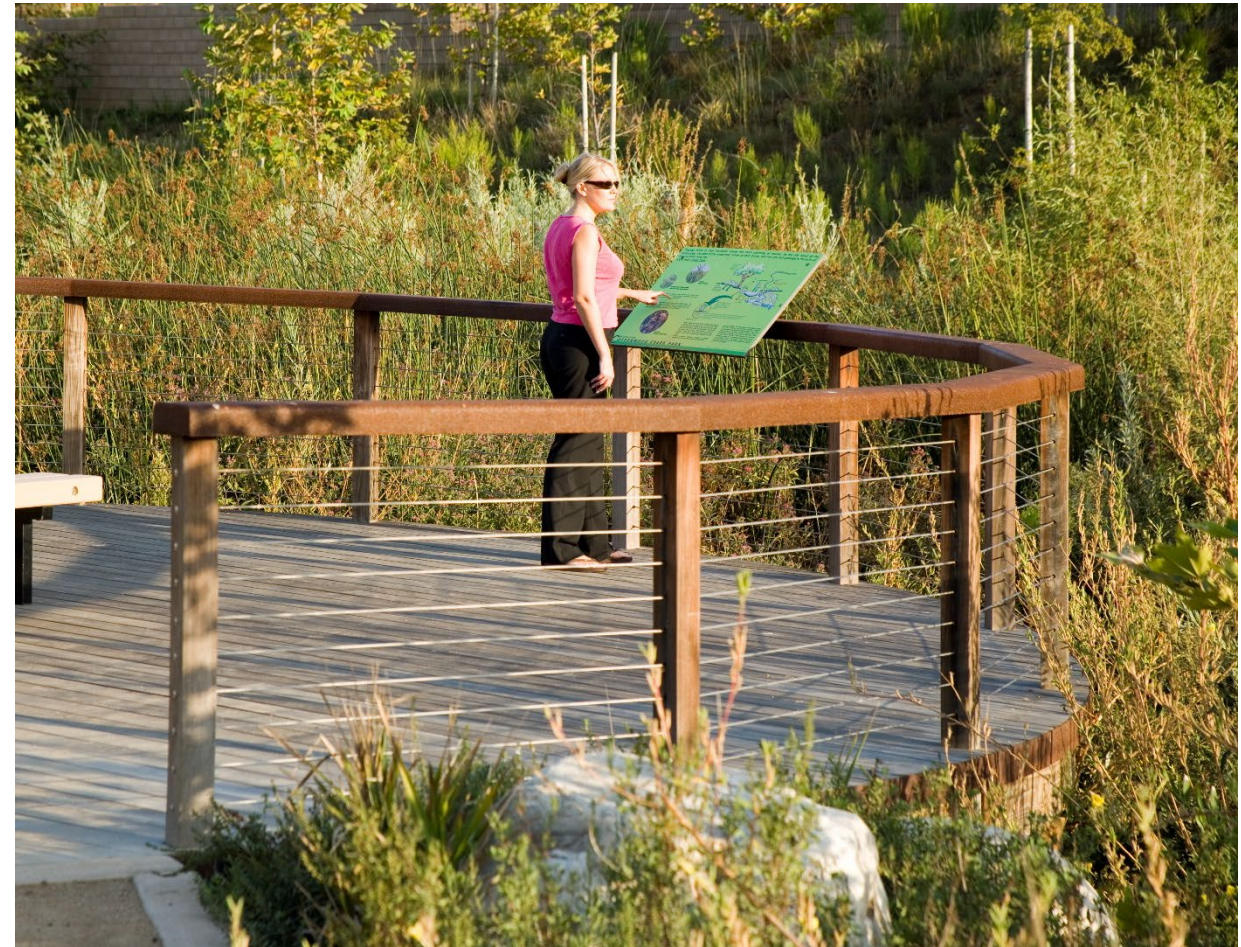
Overlooks, Interpretive
Education



River Park Central



Cottonwood Creek Park



Living Learning Laboratory

Interpretive Educational Experiences - Discovery



Camino Ruiz Park, San Diego

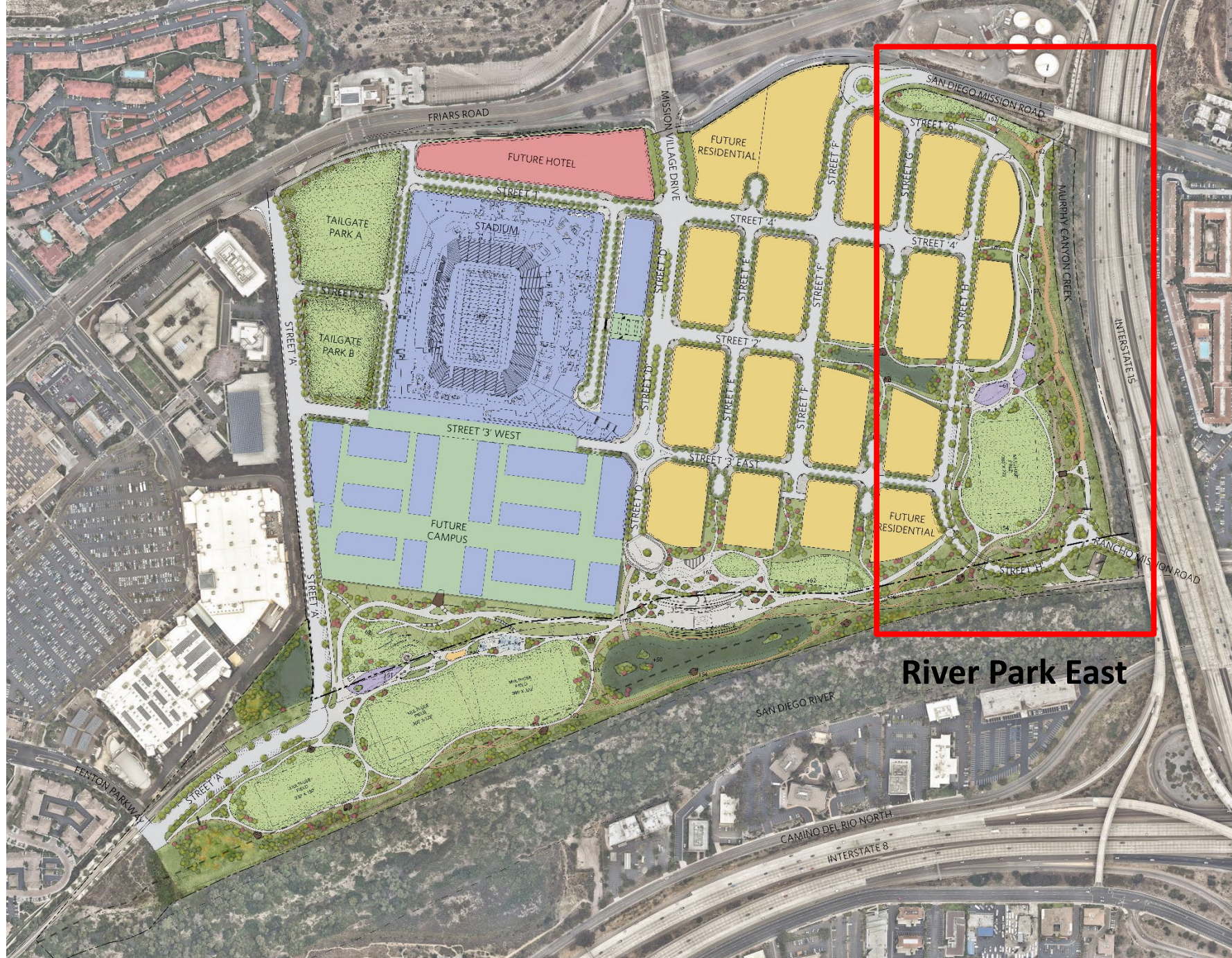
SDSU Mission Valley Site Development

Interpretive Education Themes



- San Diego River and watershed ★
- San Diego River flora and fauna ★
- Site history, evolution of the land ★
- Modern history, site engineering history
- Stadium history
- Historical photos
- History of agriculture in Mission Valley
- San Diego Mission
- Kumeyaay history ★
- History of families in Mission Valley

★ Highest priorities from 12/14/19 workshop

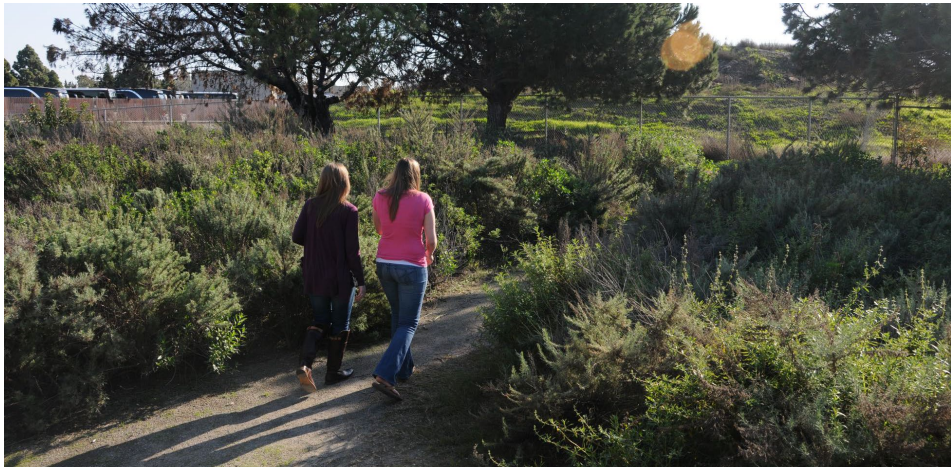


River Park East

Off-Leash Dog Park



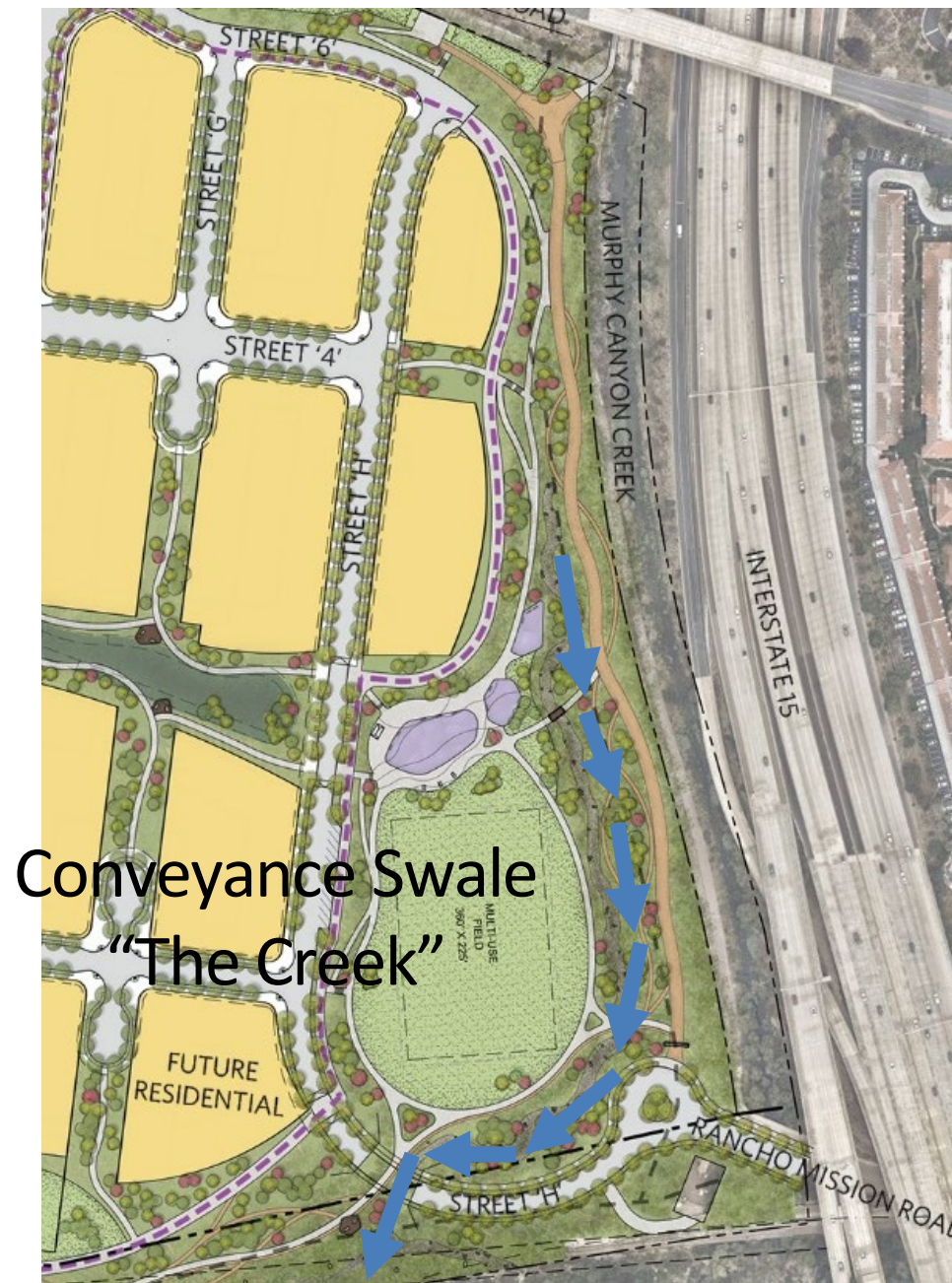
River
Park East



Connection
to Murphy
Canyon
Hike and
Bike Trail

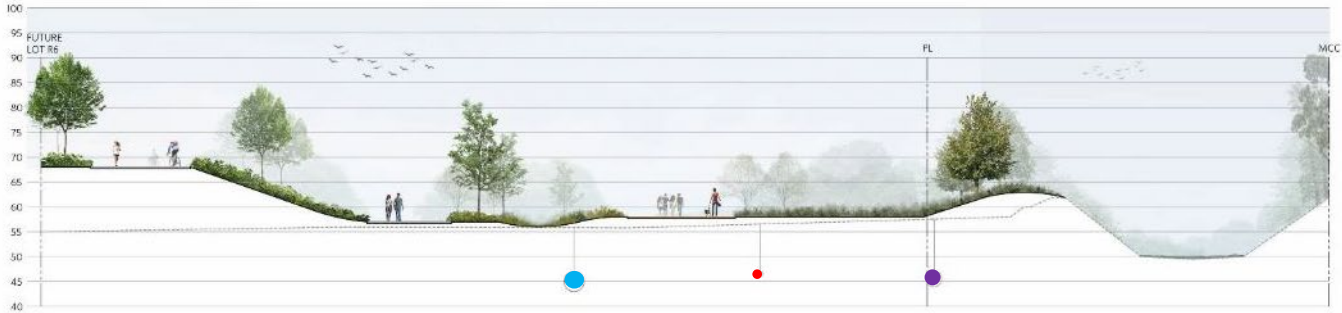
Passive
Open
Space and
Trails

River Park East



Briercrest Park

Site Sections

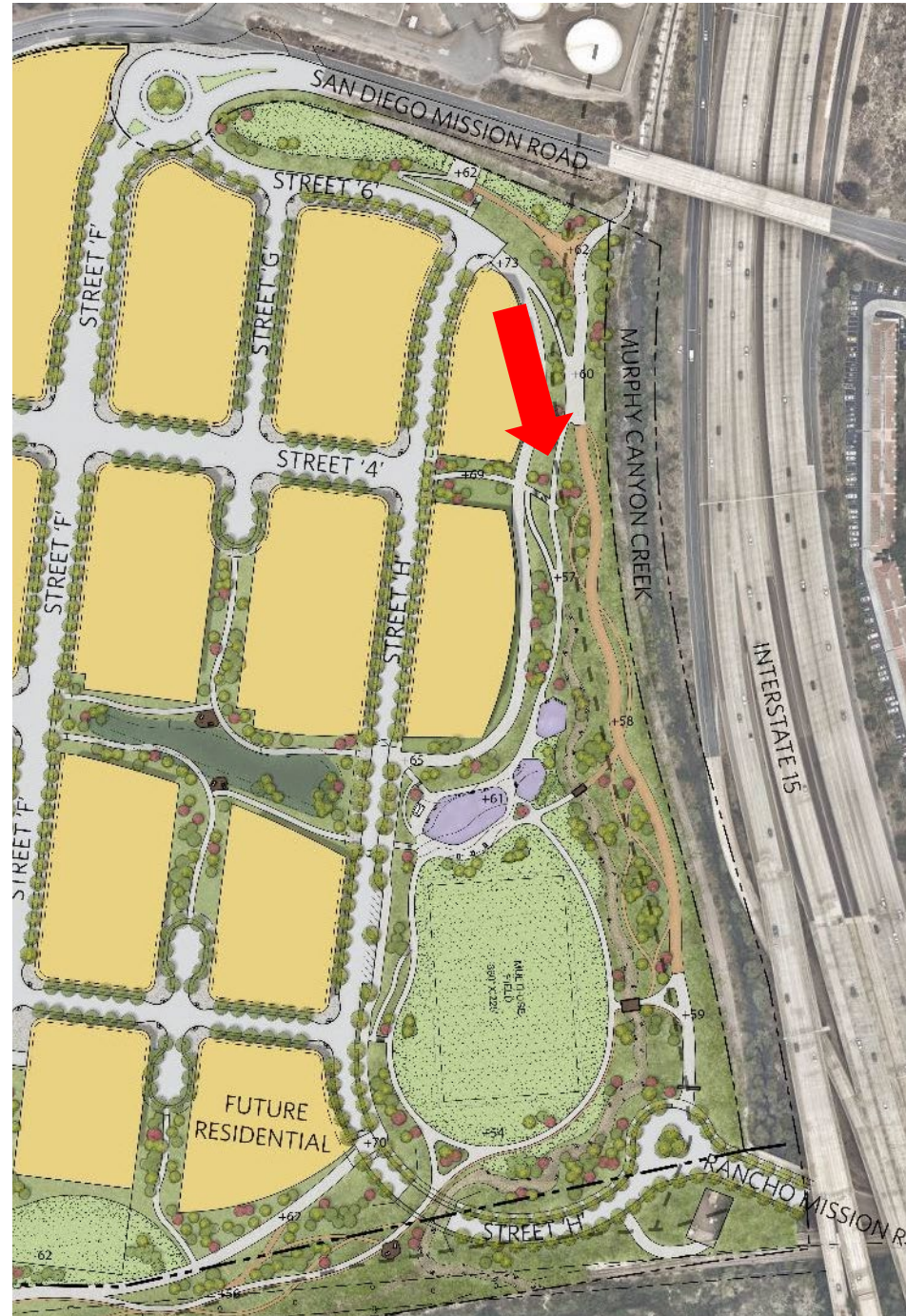


HORIZONTAL SCALE: 1" = 20' | VERTICAL SCALE: 1" = 20'



HORIZONTAL SCALE: 1" = 20' | VERTICAL SCALE: 1" = 20'

Simulation Viewpoint



River Park East



Existing Conditions



Illustration



Illustration

Children's Play (Natural Play)



Natural Play Examples



Multi-purpose Field



Tunnel Crossing Under Street H



Santa Fe Undercrossing



Civita Park



River Park East

Simulation Viewpoint



River Park East



Existing Conditions



Illustration

Park Master Plan



SDSU Mission Valley

River Park Master Plan January 13, 2020



SAN DIEGO STATE
UNIVERSITY



PROJECT DESIGN CONSULTANTS



SCHMIDT
DESIGN
GROUP